



## AXESS™

LOW PROFILE NASAL MASK

The New Look of  
Nitrous Oxide Sedation  
for Dentistry

- Greater Patient Comfort
- Unencumbered Mouth Access
- Excellent, Efficient Patient Care
- Improved Surgery Efficiency
- Improved Patient Safety

**ACCUTRON** Inc.  
Advanced Nitrous Oxide Sedation Systems

**SEE PAGE 9**



**ACCUTRON** Inc.  
Advanced Nitrous Oxide Sedation Systems

**ACCUTRON's**  
Flowmeter  
systems include the State-of-the-Art  
**Digital Ultra PC** unit that brings the  
flow tube technology systems into  
modern standards of  
infection control  
combined with  
total failsafe  
standards.

**AUSTRALIAN  
STANDARDS  
COMPLIANT**

**SEE PAGE 8**



**X Tool**

**The X Tool Instruments from Zepf**

The ideal instrument to preserve hard and soft tissue  
structures during the extraction phase and to follow  
the principles of minimal invasiveness.

Watch the video and get full details at:  
**[zepfdental.com.au/x-tool](http://zepfdental.com.au/x-tool)**

**HELMUT ZEPF**  
MEDIZINTECHNIK GMBH

**SEE PAGE 5**

**BIONIK** ZEPF

## Removable and Interchangeable Curette / Scaler Tip Inserts

Complete Curette / Scaler  
**\$58+GST = \$63.80**

Exchangeable Insert Curette / Scaler  
**\$28+GST = \$30.80 each end**

*Gracey Curettes are Colour Coded for all Quadrants*

**Incisors / Canines**

GRA 1/2

GRA 3/4

GRA 5/6



**Premolars / Molars**

GRA 7/8

buccal / lingual

GRA 9/10

buccal / lingual

GRA 11/12

mesial

**Titanium  
Curettes and  
Scalers also  
available**



GRA 13/14 distal

GRA 15/16 mesial

GRA 17/18 distal



Gracey 1/2 Special Curette Complete  
**Order Ref. ZE.24.201.01G**



Insert Gracey #1  
Ref.ZE.24.751.101G

**Front Teeth**

Insert Gracey #2  
Ref.ZE.24.751.102G

Gracey 3/4 Special Curette Complete  
**Order Ref. ZE.24.202.03G**



Insert Gracey #3  
Ref.ZE.24.751.103G

**Front Teeth / Premolars**

Insert Gracey #4  
Ref.ZE.24.751.104G

Gracey 5/6 Special Curette Complete  
**Order Ref. ZE.24.203.05G**



Insert Gracey #5  
Ref.ZE.24.751.105G

**Front Teeth / Premolars**

Insert Gracey #6  
Ref.ZE.24.751.106G

Gracey 7/8 Special Curette Complete  
**Order Ref. ZE.24.205.07G**



Insert Gracey #7  
Ref.ZE.24.751.107G

**Front Teeth / Premolars /  
Buccal / Lingual**

Insert Gracey #8  
Ref.ZE.24.751.108G

Gracey 9/10 Special Curette Complete  
**Order Ref. ZE.24.206.09G**



Insert Gracey #9  
Ref.ZE.24.751.109G

**Premolars / Molars**

Insert Gracey #10  
Ref.ZE.24.751.110G

Gracey 11/12 Special Curette Complete  
**Order Ref. ZE.24.204.11G**



Insert Gracey #11  
Ref.ZE.24.751.111G

**All Mesial Surfaces  
Premolars / Molars**

Insert Gracey #12  
Ref.ZE.24.751.112G

Gracey 13/14 Special Curette Complete  
**Order Ref. ZE.24.207.13G**



Insert Gracey #13  
Ref.ZE.24.751.113G

**All Distal Surfaces  
Premolars / Molars**

Insert Gracey #14  
Ref.ZE.24.751.114G

Gracey 15/16 Special Curette Complete  
**Order Ref. ZE.24.204.15G**



Insert Gracey #15  
Ref.ZE.24.751.115G

**All Mesial Surfaces  
Premolars / Molars**

Insert Gracey #16  
Ref.ZE.24.751.116G

Gracey 17/18 Special Curette Complete  
**Order Ref. ZE.24.207.17G**



Insert Gracey #17  
Ref.ZE.24.751.117G

**Distal Surfaces / Deep  
Pockets**

Insert Gracey #18  
Ref.ZE.24.751.118G

Sickle Scaler Complete  
**Order Ref. ZE.24.208.30S**



Scaler Insert  
Ref.ZE.24.751.130

**Front Teeth**

Scaler Insert  
Ref.ZE.24.751.131

Scaler Hygienist H6/H7 Complete  
**Order Ref. ZE.24.208.06H**



Insert H7  
Ref.ZE.24.751.107H

**Front Teeth / Premolars**

Insert H6  
Ref.ZE.24.751.106H

Scaler Hygienist H6/H7 Fine Complete  
**Order Ref. ZE.24.208.06HF**



Insert H7 Fine  
Ref.ZE.24.751.107HF

**Fine Version  
Front Teeth / Premolars**

Insert H6 Fine  
Ref.ZE.24.751.106HF

Scaler Mini-Kaplan CI 2/3  
**Order Ref. ZE.24.208.02CI**



Insert CI 2  
Ref.ZE.24.751.102CI

**Facial Surfaces  
Large Plaque Areas**

Insert CI 3  
Ref.ZE.24.751.103CI

Sickle Scaler U13S Complete  
**Order Ref. ZE.24.208.35U**



Insert U 135UL  
Ref.ZE.24.751.135UL

**Small Facial Surfaces  
Interdental Spaces**

Insert U 135UR  
Ref.ZE.24.751.135UR

Sickle Scaler 204S Complete  
**Order Ref. ZE.24.208.04S**



Insert 204L  
Ref.ZE.24.751.204L

**Molar Interdental Spaces**

Insert 204R  
Ref.ZE.24.751.204R

Sickle Scaler 204LD Complete  
**Order Ref. ZE.24.208.04SD**



Insert 204LD  
Ref.ZE.24.751.204LD

**Premolar & Frontal Area  
Narrow Interdental Spaces**

Insert 204RD  
Ref.ZE.24.751.204RD

Sickle Molar Scaler M23A Complete  
**Order Ref. ZE.24.208.23A**



Insert M23L  
Ref.ZE.24.751.23AL

**Universal Use & Molar  
Interdental Spaces**

Insert M23R  
Ref.ZE.24.751.23AR

M23 Special Scaler Complete  
**Order Ref. ZE.24.207.23**



Insert M23R  
Ref.ZE.24.751.123R

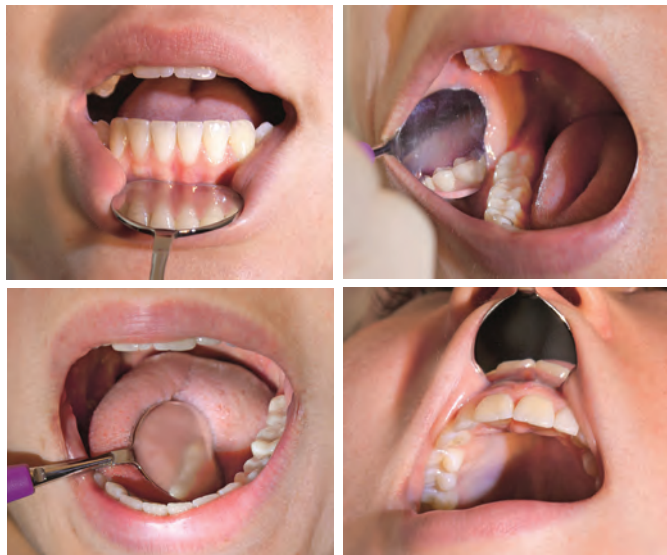
**Lower & Upper Side Teeth  
Supra-gingival Plaque**

Insert M23L  
Ref.ZE.24.751.123L



## BIONIK<sup>ZEPP</sup> Retractor & Mouth Mirror

- Able to be used as Cheek, tongue retractor, or muco-periosteal flap retractor.
- Its innovative heart shape allows ergonomic adaption for all four quadrants.
- Due to the reflective surface, the retractor allows for optimal illumination of the surgical area.



**Retractor Mirror & Universal Handle**  
27mm mirror width with  
Purple Handle order ref. ZE.24.062.31  
24mm mirror width with  
Orange Handle order ref. ZE.24.062.30

**Complete Retractor / Mirror**  
**\$52.00+GST = \$57.20**



**Replacement Retractor Mirrors**  
27mm width order ref. ZE.37.448.10  
24mm width order ref. ZE.37.448.20

**Replacement Retractor / Mirror**  
**\$36.00+GST = \$39.60**



Plane Mirror - Pkt 12  
**22mm Ø**  
Ref. ZE.24.061.22  
**\$36+GST = \$39.60**

Lipcare Mirror - Pkt 5  
**Atraumatic 24mm Ø**  
Ref. ZE.24.062.24  
**\$67+GST = \$73.70**

MEGAduo Mirror - Pkt 6  
**Double-Sided 22mm Ø**  
Ref. ZE.24.072.22  
**\$85+GST = \$93.50**

## HELMUT ZEPF MEDIZINTECHNIK GMBH



They are suitable to determine the parodontal status, especially for use on implants. Scratching of the implant surface is avoided with these probes.

**Autoclavable; the tips are reusable until they bend or the graduation is faded.**

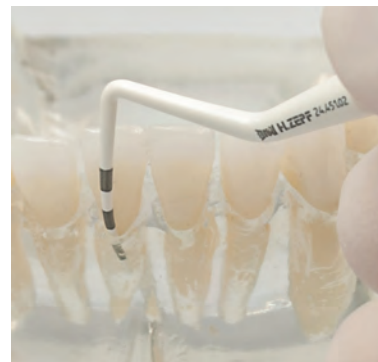
PA Probe # GPNG 22  
Graduation 2 / 4 / 6 / 8 / 10 / 12 mm  
Order ref ZE.24.451.02  
Packet 12

PA Probe # PCPG 11.5  
Graduation 3.5 / 5.5 / 8.5 / 11.5 mm  
Order ref ZE.24.451.03  
Packet 12

PA Probe # CNC North Carolina  
Graduation 1 - 15 mm in steps  
Order ref ZE.24.451.06  
Packet 12

## Contrast PA Probe Inserts

Zepf Contrast PA Probes are made of plastic material and consist of a flexible working tip which adapts optimally to the anatomy of the pocket depth when measuring.



**Packet 12: \$169 +GST = \$185.90**

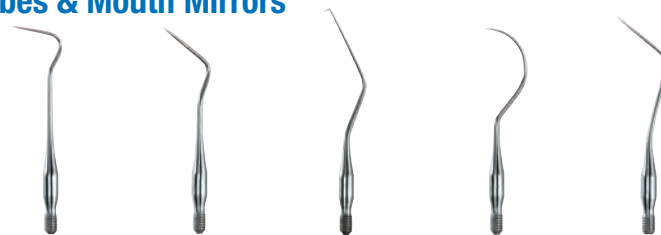


Zepf Bionik Handle QuickFIX with end cap.  
For use with PA Contrast Tips and other BIONIK instruments  
Available in 10 different colours.  
Order ref ZE.26.193.10

**\$18.90+GST = \$20.79**

## BIONIK<sup>ZEPP</sup> Interchangeable Handle System Probes & Mouth Mirrors

**\$11.60 +GST = \$12.76 per Probe**



Probe #8  
ZE.24.099.08

Probe #9  
ZE.24.499.09

Probe #17  
ZE.24.099.17

Probe #23  
ZE.24.099.23

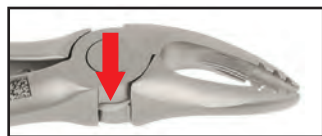
Probe #25  
ZE.24.099.25



Zepf Bionik Handle QuickFIX with end cap.  
For use with Zepf probes and mouth mirrors. 2.5mm thread  
Available in 10 different colours.  
Order ref ZE.26.194.10

**\$25+GST = \$27.50**

## HELMUT ZEPF MEDIZINTECHNIK GMBH



Zepf Forceps include a wear resistant Teflon disc to eliminate wear and tear in the joint and ensures smooth long term use.



## Xcision Forceps

With exclusive design and 25% reduced weight, Zepf Xcision Forceps are lighter and stronger than any other forceps for ergonomic yet optimal extraction.

For details of all ZEPF Forcep types visit:  
[zepfdental.com.au/zepf-xcision/](http://zepfdental.com.au/zepf-xcision/)



Extraction Forceps Fig.2  
English Pattern ASH  
Upper Incisors & Eye Teeth  
Order Ref. ZE.12.002.00Z  
**\$165+GST = \$181.50**



**Special Beaks**

Extraction Forceps Fig.35  
English Pattern ASH  
Upper Premolars  
Order Ref. ZE.12.035.00Z  
**\$190+GST = \$209.00**



Extraction Forceps Fig.17  
English Pattern ASH  
Upper Right Molars  
Order Ref. ZE.12.017.00Z  
**\$170+GST = \$187.00**



Extraction Forceps Fig.22  
English Pattern ASH  
Lower Molars  
Order Ref. ZE.12.022.00Z  
**\$170+GST = \$187.00**



Extraction Forceps Fig.67A  
English Pattern ASH  
Upper Wisdom Teeth  
Order Ref. ZE.12.067.90Z  
**\$205+GST = \$225.50**



**Better Access**

Extraction Forceps Fig.44  
English Pattern ASH  
Upper Jaw Roots  
Order Ref. ZE.12.044.15Z  
**\$205+GST = \$225.50**

Extraction Forceps Fig.33A  
English Pattern ASH  
Lower Incisors, Canines & Roots  
Order Ref. ZE.12.033.01Z  
**\$175+GST = \$192.50**



Extraction Forceps Fig.36  
English Pattern ASH  
Lower Incisors, Premolars  
Order Ref. ZE.12.036.00Z  
**\$190+GST = \$209**



**Special Beaks**



Extraction Forceps Fig.18  
English Pattern ASH  
Upper Left Molars  
Order Ref. ZE.12.018.00Z  
**\$170+GST = \$187.00**



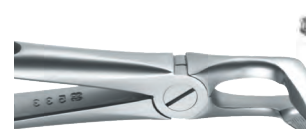
Extraction Forceps Fig.73  
English Pattern ASH  
Lower Molars  
Order Ref. ZE.12.073.01Z  
**\$175+GST = \$192.50**



**Better Access**



Extraction Forceps Fig.79  
English Pattern ASH Mod.  
Lower Wisdom Teeth  
Order Ref. ZE.12.079.95Z  
**\$205+GST = \$225.50**



Extraction Forceps Fig.45SB  
English Pattern ASH  
Lower Jaw Roots  
Order Ref. ZE.12.045.15Z  
**\$205+GST = \$225.50**



ZEPF CompoSMOOTH, a special silicon brush, allows an easy adaption and modelling of the composite surface before polymerisation. Even 'sticky' composites can be adapted in an optimal way. The perfect surface morphology is created by only slight pressure.

**CompoSMOOTH**  
THE SURFACE IS THE KEY...



Replacement Soft Application Inserts - Set of 12  
**\$57.60+GST = \$63.36**

CompoSMOOTH Set  
Handpiece with 36 Inserts  
Order Ref. ZE.19.200.00S  
**\$ 320+GST=\$ 352.00**

Tapered Type  
Code ZE.19.201.11



Flat Type  
Code ZE.19.201.21



Pointed Type  
Code ZE.19.201.31





## Children's Forceps

**ZEPF**  
**roba**  
EDITION  
PATENTED



Conventional Forceps



Zepf Xcision Forceps

The Patented Milk Teeth RoBa-Edition Forceps as designed by Dr Beck of Switzerland, incorporate the design of conventional extracting forceps with the advantages of tapered deep-grip beaks that fit exactly onto the tooth for maximum grip during extraction.



Upper Incisors & Canines  
Order ref. ZE.10.685.29



Lower Incisors & Canines  
Order ref. ZE.10.685.33



Upper Premolars  
Order ref. ZE.10.685.07



Lower Premolars  
Order ref. ZE.10.685.07



Upper Molars  
Order ref. ZE.10.685.51



Upper Molars  
Order ref. ZE.10.685.52



Lower Molars  
Order ref. ZE.10.685.22



Zepf Children's  
Forceps - each  
**\$150.00+GST = \$165.00**

**HELMUT ZEPF**  
MEDIZINTECHNIK GMBH



Continued from Page 1

## The X Tool Instruments from ZEPF



X Luxa Tool Straight 2.5mm  
**Front Teeth and Upper Jaw**

Order ref ZE.17.007.01



X Luxa Tool Straight 4.5mm  
**Front Teeth and Upper Jaw**

Order ref ZE.17.007.02



X Luxa Tool Curved 2.5mm  
**Lower Jaw**

Order ref ZE.17.007.03



X Luxa Tool Curved 4.5mm  
**Lower Jaw**

Order ref ZE.17.007.04



X Desmo Tool Straight 4.0mm Spade  
**Loosening of desmodontal fibres**

Order ref ZE.17.007.05

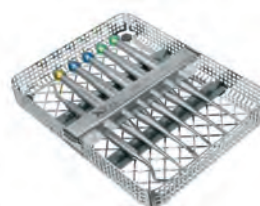
**Zepf X Luxa Tool - each: \$120.00+GST = \$132.00**

Lucas Scraper, 2.5mm two ended - Order ref ZE.41.855.01Z

**Inspection and Curettage of the empty aveolus and removal of inflamed and connective fibre tissues.**



**Lucas Scraper: \$102.00+GST = \$112.20**



### The Complete X Tool Set

All the instruments above within an organised and sterilisable Stainless Steel Washtray. Order ref ZE.17.007.00  
**\$690+GST = \$759**

**ZEPF X-Tool Proximators & Sydnestomotomes available**  
Get the details at [www.zepfdental.com.au/x-tool](http://www.zepfdental.com.au/x-tool)



Periotome P1 Order ref ZE.26.182.11 **\$90+GST = \$99**



Periotome P2 Order ref ZE.26.182.12 **\$90+GST = \$99**



Periotome P3 Order ref ZE.26.182.13 **\$90+GST = \$99**

# Benex® II

Pat.No. CH 696 458

**The Ultimate in Atraumatic Extraction**

**1**

Anaesthesia, cutting periodontal fibres in sulcus by using Periotome.

**2**

Loosening of the strong roots by axial movements through use of slim Root Elevator or X-Tool instrument.

**3**

Insertion of the Diamond Coated twist drill in the axis centre of the Root Fragment.

**4**

According to circumstances, the short or long extraction screw with screw support is inserted.

**5**

The extractor is positioned on the adjacent crowns.

An impression quadrant support is included for large gap areas.

Developed to provide the ultimate in gentle extraction.

In modern dentistry, implantology following extraction is favoured.

Benex II provides gentle and simple extraction of roots over the whole mouth. Damage to soft tissue and the surrounding bone is minimised.

Due to the longitudinal extraction method, Benex II provides the optimal base for direct implantation. Studies made after the use of BenexII prove that the reossification of the extraction alveolar wall advances optimally. This is a great advantage for retarded implantation.

*Conventional Extraction  
Pressure on the alveolar  
wall by forceps or root  
elevator*

*Benex II Extraction  
Purely axial traction.*

**6**

Once the extractor is positioned properly, the extraction is carried out by turning the hand screw.

In case of strong, long roots, the periodontal fibres have to be pre-stretched during 30 seconds by applying a sub-maximum traction.

Watch the Video and get full details at:  
[www.zepfdental.com.au/benex-ii/](http://www.zepfdental.com.au/benex-ii/)

*Benex II Longitudinal  
Extraction.*

*Hard and Soft tissue  
is preserved.*

## The Complete Benex II System

Extractor, Pullrope, Driver Guides, Quadrant Support, Drills and Set Screws etc within a organised and sterilisable Stainless Steel Cassette and Washtray. Order ref ZE.12.303.00

**\$2,700+GST = \$2,970**

## ZEPF Crown Spreading Pliers

Perfectly designed for spreading of crowns without pressure on the root and neighbouring tooth.

Ref ZE.19.277.01Z

**\$290+GST = \$319**

## ZEPF Peet Splinter Forceps

**Diamond Coated for Maximum Grip**

Acutely curved to provide maximum accessibility for all areas including the molar region.

11cm 90° la Grange curved

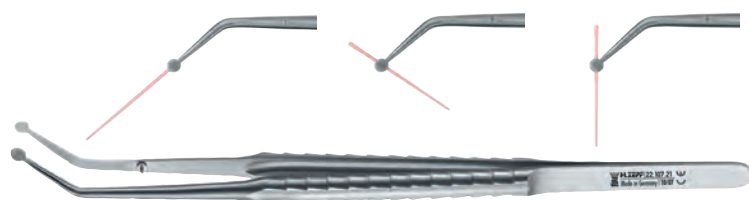
Ref ZE.22.523.90D

**\$160+GST = \$176**

**DIAMOND  
COATED**



## HELMUT ZEPF MEDIZINTECHNIK GMBH



### Anatomical Plate Forceps *Patented*

With Planar contact to ensure safe support in each grip angle for fine and delicate objects. The circular tip surfaces incorporate additional serrations inside for maximum grip.

Order ref ZE.22.107.21

**\$150+GST = \$165**

### ZEPF Easy Matrix Setter

#### Forceps for Placing Partial Matrix

The anatomically shaped design provides optimal placement to avoid damaging the matrix when teeth are placed closely together. The correct contact point is easily achieved.



#### SET OF 2

- Distal Partial Matrix Setter
- Mesial Partial Matrix Setter

Order ref ZE.19.080.12

**\$210+GST = \$231**

### ZEPF Universal Finishing Clamps

Saves you and the patient



#### PAIR OF 2

Order ref ZE.23.120.12

**\$160+GST = \$176**

**Better access means optimal results and less patient discomfort. Perfect for:**

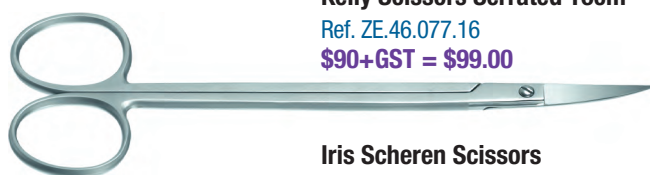
- Completion of approximal composite fillings
- Correction of filling overhangs in the approximal area.
- Removal of Matrix strips after filling inlays.
- Clamping floss for interdental plaque removal
- Clamping strips for removal residue cement after crown/bridges.

## ZEPF Surgical Scissors and Instruments

### Kelly Scissors Serrated 16cm

Ref. ZE.46.077.16

**\$90+GST = \$99.00**



### Iris Scheren Scissors

Extra large rings 11.5cm

Curved Ref. ZE.46.051.11

Straight Ref. ZE.46.050.11

**\$75+GST = \$82.50**



### La Grange Scissors

Double Curved 11.5cm

Ref. ZE.46.057.11

**\$95+GST = \$104.50**



### Zepf London College Forceps

Serrated Long Tips 15cm

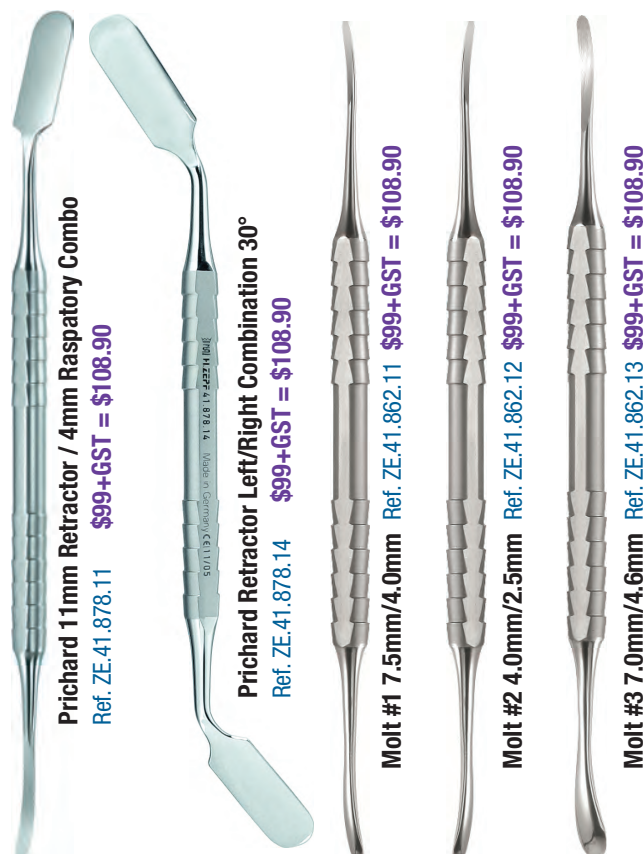
Ref. ZE.22.011.13

**\$18.90+GST = \$20.79**



Also available in Diamond Coated Version - Contact us for Details

## ZEPF Periosteal Elevators & Arrestors



**Prichard 11mm Retractor / 4mm Respiratory Combo**

Ref. ZE.41.878.11 **\$99+GST = \$108.90**

**Prichard Retractor Left/Right Combination 30°**

Ref. ZE.41.878.14 **\$99+GST = \$108.90**

**Molt #1 7.5mm/4.0mm** Ref. ZE.41.862.11 **\$99+GST = \$108.90**

**Molt #2 4.0mm/2.5mm** Ref. ZE.41.862.12 **\$99+GST = \$108.90**

**Molt #3 7.0mm/4.6mm** Ref. ZE.41.862.13 **\$99+GST = \$108.90**

**Full ZEPF Surgical Range Available - Contact us!**



## Digital Ultra Systems



Accutron's Digital Ultra Flowmeter is the right choice for clinicians who prefer to work in a digital environment but want critical parameters displayed both numerically and as electronic flow tubes. The ease of color-coded, fingertip controls is an additional feature of the flowmeter.

A smooth front fascia enhances infection control practice by allowing barrier protection. The unit's design complements aseptic and contemporary operatory environments.

Automatic Calibration – adjust total flow while gas % remains constant, adjust gas % and total.

- Flow remains constant
- Digital and Electronic Gas Flow Displays
- Microprocessor Technology; Instant response to adjustments
- N2O Ratio Control – min. 30% O2 total flow
- Audible and Visual (LED) Low O2 alarms
- Oxygen Fail-safe; Oxygen Flush
- Sealed Membrane Switch Technology – easy to clean for disinfection or barrier protection
- Optional Remote Control
- Optional Printer – records gas delivery during patient treatment.



### Complete Digital Ultra Mobile System

w/ Clearview Scavenging Hood Circuit\*

**\$7,200+GST = \$7,920**

**INCLUDES REGULATORS FOR CYLINDERS**

Both Oxygen and Nitrous Oxide Regulators included.



## Flowmeters - Complete Systems

### Ultra PC% Systems



Visit  
[www.nitrous-sedation.com.au](http://www.nitrous-sedation.com.au)  
For all about Nitrous Oxide Sedation for Dentistry.

Accutron's Ultra PC % Flowmeter is designed for the practitioner who demands precision control, consistent performance and state-of-the-art innovation within an easy to use and compact analog flowmeter.

The unit combines efficient operation with optimal safety, and its smooth appearance complements both infection control disinfection with modern operatory aesthetics.

Easy operation—simply set the N2O% and control the total flow rate with a single control.

- Single-knob Total Flow Control
- N2O Ratio Control – min. 30% Oxygen
- Oxygen Fail-safe
- Oxygen Flush
- Oxygen Resuscitation Connector
- Emergency Air Valve
- Directional Check Valve

### Complete Ultra PC% Mobile System

w/ Clearview Scavenging Hood Circuit\*

**\$6,200+GST = \$6,820**

**INCLUDES REGULATORS FOR CYLINDERS**

Both Oxygen and Nitrous Oxide Regulators included.



Accutron Nitrous Oxide Sedation Systems are available in Cabinet Mounted Systems in a range of configurations to suit both Single & Multiple Surgery Environments.

**Contact Us for Details**

Telephone: 02 9153 6700 | Email: [office@ritterdental.com.au](mailto:office@ritterdental.com.au)





## Scavenging Hoods and Tubing Sets

### Axess Low Profile Nasal Hoods

The Axess low profile design provides unencumbered mouth access whilst its small lightweight scavenging tubing is easy to work around, enabling clinicians to deliver excellent efficient care to more patients.



Designed for the lightweight Axess autoclavable tubing set.

### Clearview Nasal Hoods

Accutron's Clearview Scavenging Hood System incorporate a double hood with a transparent outer hood, allowing the **doctor to monitor the patient's breathing** for increased safety.

Combined with scented hoods, Clearview combined with NO<sub>2</sub> reduces patient anxiety for treatment.



Available to fit existing Tubing Sets - see below for Adapter Kits.

## Nasal Hoods and Tubing Sets for Accutron and other Brand RA Systems

### Axess Low Profile Nasal Hoods



#### Single use Hoods

**Small Size (Pedo)**  
Unscented  
Bubblegum Scent  
Mint Scent

#### Set of 24

**\$180+GST = \$198**  
Ref. AC.53037-9  
Ref. AC.53037-12  
Ref. AC.53037-16

**Medium Size (Adult)**  
Unscented  
Bubblegum Scent  
Mint Scent

**\$180+GST = \$198**  
Ref. AC.53035-9  
Ref. AC.53035-12  
Ref. AC.53035-16

**Large Size (Adult)**  
Unscented  
Bubblegum Scent  
Mint Scent

**\$180+GST = \$198**  
Ref. AC.53034-9  
Ref. AC.53034-12  
Ref. AC.53034-16

#### Axess Scavenging Tubing Set

Lightweight and Autoclavable, allows you to fit the Axess Hoods to any system type!

For tubing with Scavenging Control valve use with non-Accutron existing systems  
AC.53005 **\$380+GST = \$418**

For tubing less Scavenging Control valve use with existing Accutron systems  
AC.53006 **\$320+GST = \$352**

**Save 30% on Axess Tubing Set with your 1st Axess Hood Order!**

### Clearview Hoods



- Fits Accutron Scavenging Sets
- Fits Porter™ Scavenging Sets
- Fits Matrx™ Scavenging Sets\*

#### Single Use Hoods - Set of 12

##### Adult Size

Unscented  
Orange Scent  
Vanilla Scent  
Mint Scent

**\$99+GST = \$108.90**

Ref. AC.33035-9  
Ref. AC.33035-10  
Ref. AC.33035-14  
Ref. AC.33035-16

##### Pedo Size

Orange Scent  
Strawberry Scent  
Bubblegum Scent  
Grape Scent

**\$99+GST = \$108.90**

Ref. AC.33037-10  
Ref. AC.33037-16  
Ref. AC.33037-12  
Ref. AC.33037-17

Converter Kits for  
Porter™ & Matrx™  
Tubing Sets

**NO CHARGE**

#### For Clearview Hood

For Porter Tubing Set No Adapter Needed  
For Matrx Tubing Set Ref. AC.35360

#### For PIP+ Hood

For Porter Tubing Set Ref. AC.35000  
For Matrx Tubing Set Ref. AC.35000M  
For ANS Tubing Set Ref. AC.35325



### PIP+ Hoods



- Fits Accutron PIP+ Tubing Sets
- Fits Porter™ Scavenging Sets\*
- Fits Matrx™ Scavenging Sets\*

#### Single Use Hoods - Set of 24

##### Large Size

Variety Set Ref. AC.33015-3  
Mint, Peach and Vanilla Scents

**\$180+GST = \$198**

##### Medium Size

Variety Set 1 Ref. AC.33016-1  
Orange, Strawberry & Bubblegum Scents  
Variety Set 2 Ref. AC.33016-3  
Mint, Peach and Vanilla Scents

**\$170+GST = \$187**

##### Small Size

Variety Set Ref. AC.33017-1  
Orange, Strawberry & Bubblegum Scents

**\$160+GST = \$176**

### Autoclavable Hood



#### Multiple Use

##### Large Size

**\$190+GST = \$209**

Ref. AC.33018

##### Medium Size

**\$180+GST = \$198**

Ref. AC.33019

##### Small Size

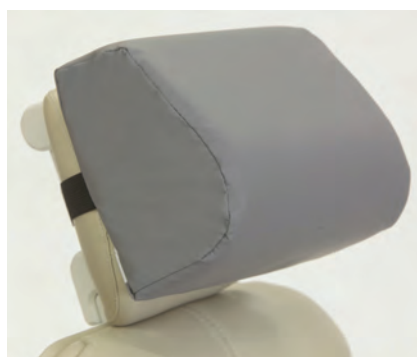
**\$170+GST = \$187**

Ref. AC.33020

## The Ultimate in Patient Comfort

*Now available by Popular demand, the complete CRESCENT range!*

All Crescent Products are available in **DARK BLUE** or **BEIGE** or **GREY**



### Crescent Patient Pillow

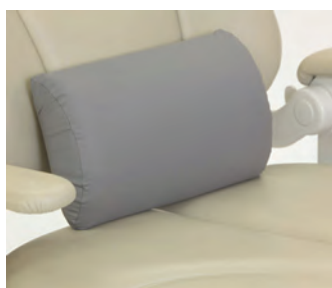
*Is your dental chair giving your patients a headache?*

By molding itself around the patient's head and neck, the Patient Pillow gives great comfort PLUS excellent patient positioning.

**BEST SELLER**

**\$108 +gst = \$118.80**

Ref. CR.DP51 for Blue  
Ref. CR.DP55 for Beige  
Ref. CR.DP52 for Grey



### Crescent Backrest

By supporting the lower lumbar area that many dental chairs neglect, your patient will feel far more relaxed and comfortable during prolonged procedures.

Ref. CR.DP61 for Blue  
Ref. CR.DP65 for Beige  
Ref. CR.DP62 for Grey

**\$120 +gst = \$132**

### Crescent Knee Support

Your patients will feel an amazing difference in comfort while using the Knee Support. By allowing the legs to lie in this natural position, pressure is relieved from the lower back and hips.



Ref. CR.DP91 for Blue  
Ref. CR.DP95 for Beige  
Ref. CR.DP92 for Grey

**\$140 +gst = \$154**

### Crescent Low Profile Pillow

Suitable for patients that need improved comfort but find the standard pillow too large. Suitable for children or patients with enhanced back pain.



Ref. CR.DP41 for Blue  
Ref. CR.DP45 for Beige  
Ref. CR.DP42 for Grey

**\$108 +gst = \$118.80**

### Crescent Booster Seat

Position your little patients properly! The Booster seat raises the height of the child providing greater patient access for all dental treatment. Recommended for use with the Patient Pillow to assist in proper positioning for the head and neck.



**BEST SELLER**



**Booster Seat Only**  
**\$290 +gst = \$319**

Ref. CR.DP81 for Blue  
Ref. CR.DP87 for Pattern  
Ref. CR.DP82 for Grey

**Booster Seat and Pillow Set**  
**\$360 +gst = \$396**

Ref. CR.DP81/51 for Blue  
Ref. CR.DP87/55 for Pattern  
Ref. CR.DP82/52 for Grey



## Scaler Handpiece & Tip Set

**NOW AVAILABLE IN COMPATIBLE VERSIONS FOR EMS™ OR SATELEC™!!**  
Improved scaler handpiece now utilises PEEK plastic for increased autoclavability and durability.

**Scaler Handpiece: \$380 +gst = \$418**

For EMS compatible - Ref No. DM.SHP

For Satelec compatible - Ref. No. WP.DTEHP

**Scaler Handpiece & Tip Set: \$520 +gst = \$572**

For EMS compatible - Ref No. DM.SHP-K

For Satelec compatible - Ref. No. WP.DTEHP-K

COMPRISING: - 1 x handpiece - 2 x 'A' style tips  
- 1 x 'P' style tip - 1 x 'PS' style tip - 4 x tip tools



**BUY 3  
GET 1 FREE**

## Tip Tool

- Compatible with EMS and Satelec tips
- Ensures correct tip tightness
- Autoclavable up to 135°C

Ref. WP.TW-2L

**\$27 +gst = \$29.70**

**BUY 3  
GET 1 FREE**

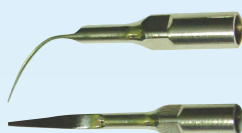


*Tip stays connected inside tool after removal*

## Scaler Tips: for EMS™, Satelec™ & Sirona™ Scalers

**BUY 3  
GET 1 FREE**

### 'A' Style Universal Tip



*Removes calculus on supra-gingival, neck of teeth & hard calculus on teeth point.*

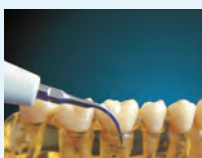
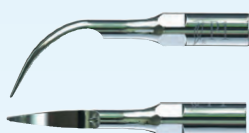
for EMS style Ref. WP.G4

for Satelec style Ref. WP.GD4

for Sirona style Ref. WP.GS4

**\$27 +gst = \$29.70**

### 'P1' Style Universal and Sub-Gingival



*Removes supra and sub-gingival calculus*

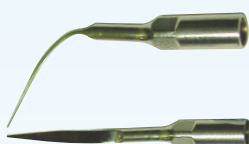
for EMS style Ref. WP.P1

for Satelec style Ref. WP.PD1

for Sirona style Ref. WP.PS1

**\$33 +gst = \$36.30**

### 'P' Style Universal and Sub-Gingival



*Removes supra, sub-gingival and inter-dental calculus*

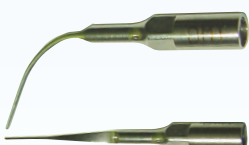
for EMS style Ref. WP.G3

for Satelec style Ref. WP.GD3

for Sirona style Ref. WP.GS3

**\$34 +gst = \$37.40**

### 'PS' Style Universal and Sub-Gingival



*Removes sub-gingival, periodontal and deep pocket calculus*

for EMS style Ref. WP.P3

for Satelec style Ref. WP.PD3

for Sirona style Ref. WP.PS3

**\$41 +gst = \$45.10**

**MELAG**

Made in Germany

Competence in Hygiene



## Vacuklav+ Premium B Class Autoclaves

Faster Cycle Times with a touch screen control panel and built in digital cycle recording.

Capacity 18.6 litres

**Vacuklav 40B** - for external water connection (auto fill+drain)

INCLUDES MELADEM 40 WATER FILTER SYSTEM

**Vacuklav 41B** - with internal water tank

**\$12,500 +gst = \$13,750**

Capacity 22.6 litres

**Vacuklav 43B** - for external water connection (auto fill+drain)

**Vacuklav 44B** - with internal water tank

INCLUDES MELADEM 40 WATER FILTER SYSTEM

**\$13,000 +gst = \$14,300**



## Vacuklav Pro-Class B Class Autoclaves

Easy to use and compact Class B autoclave, with the inclusion either printer or CF card based data logger.

Capacity 18.6 litres

**Vacuklav 31B** - with internal water tank

**\$9,900 +gst = \$10,890**

Capacity 22.6 litres

**Vacuklav 41B** - with internal water tank

**\$10,200 +gst = \$11,220**

## Dental Handpieces



### Eco Line - Highspeed



Available in KaVo, NSK or Sirona type connections

#### Power Head size - 20W power

For KaVo connector type	Fibre optic	order ref. MK.HE21KL
For NSK connector type	Fibre optic	order ref. MK.HE21NT
For Sirona connector type	Fibre optic	order ref. MK.HE21S

#### Small Head size - 18W power

For KaVo connector type	Fibre optic	order ref. MK.HE22KL
For NSK connector type	Fibre optic	order ref. MK.HE22NT
For Sirona connector type	Fibre optic	order ref. MK.HE21S

For Fibre Optic type	for 1	<b>\$595+gst = \$654.50</b>
	for 3+	<b>\$550+gst = \$605 ea</b>

### Power Edition - Highspeed

The Most  
Powerful  
Highspeed  
Available

**28W**  
KaVo connection type



POWER EDITION

For handpiece

Order Ref. MK.HC20KL **\$850+gst = \$935ea**

#### Combo Deal for Power Edition Handpiece **Save \$ 500**

3 x Power Edition HC20KL handpieces  
1 x QC6016K KaVo type LED connector **\$2,250+gst = \$2,475**

### Lowspeed - 40,000rpm with Water Spray

Optic or Non-Optic | Internal Water Spray | E Type Connection



1:1 Ratio Contra Angle Handpiece

Fibre Optic Order Ref. MK.LE11L

Non Optic Order Ref. MK.LE11

**\$725+gst = \$797.50**

**\$600+gst = \$660**

### Basic Line Lowspeed - Non Optic

All Basic pieces are compatible with NSK® brand attachments



1:1 Ratio Contra Angle Handpiece with Push Button Head

Order Ref. MK.LS0031 for 1 **\$350+gst = \$385**  
for 3+ **\$320+gst = \$352ea**



4:1 Ratio Contra Angle Handpiece FOR PROPHY

Order Ref. MK.LS0035 for 1 **\$350+gst = \$385**  
for 3+ **\$320+gst = \$352ea**

1:1 Ratio Contra Angle Handpiece FOR PROPHY

Order Ref. MK.LS21/95 for 1 **\$270+gst = \$297**  
for 3+ **\$250+gst = \$275ea**



1:1 ratio straight handpiece

Order Ref. MK.LS0012 for 1 **\$350+gst = \$385**  
for 3+ **\$320+gst = \$352ea**

### PROPHY Line - Tooth Polishing System



Light Weight & Compact | 360 Degree Rotation | Autoclavable

Available with connection to these brands couplings:

for KaVo connector type	Order Ref. MK.PR1011K
for Sirona connector type	Order Ref. MK.PR1011S
for NSK connector type	Order Ref. MK.PR1011N
for W&H connector type	Order Ref. MK.PR1011W



Before PROPHY Line



After PROPHY Line

**\$1,050+gst = \$1,155**  
incl 3 x powder bottles





## Dental Loupes

**NEW  
MODELS!**



High Quality | Clear Image | Clarity | Large Range | Comfortable Design

### N31 Design

*The easiest to use loupes available!*



**\$620+GST = \$682**

The N31 Range provide a super-long Working Distance of 300mm to 580mm in one loupe, providing the most flexible loupes for general dentistry that are also easy to use.

*Supplied with Titanium Sports Frames Loupes.*

**Recommended  
for new  
users**

Available in 2 versions	TA.25N31	NG.22N31
Magnification	2.5 x	3.3 X
Working Distance	300-580mm	300-580mm
Field of View	120mm	120mm
Weight (with frames)	40 gram	40 grams

### Galilean Loupes

*Used by most dentists for general procedures*



**\$600+GST = \$660**

Galilean flip up type loupes provide the ideal blend of a wide viewing area with a large amount of magnification. Galilean loupes provide an excellent clear view and great optical capability to suit most dental procedures.

*Supplied with Titanium Sports Frames Loupes.*

Available in 2.5x, 3.0x & 3.5x	TA.25P2	TA.30P2	TA.35P2
Magnification	2.5 x	3.0 X	3.5 x
Working Distance	340mm	340mm	340mm
<i>Specify at time of order</i>	420mm	420mm	420mm
	500mm	500mm	500mm
Field of View	120mm	120mm	
Weight (with frames)	40 gram	40 grams	

### Galilean Clip-On Loupes *Use with your existing glasses*

Available in 2.5x & 3.0x	NG.250CL	NG.300CL
Magnification	2.5 x	3.0 X
Working Distance	420mm	420mm
<i>Specify at time of order</i>	500mm	500mm
Field of View	110mm	90mm



**\$440+GST = \$484**

### LED Headlight & Lights Set

*Available for both N31 and Galilean Loupe Types*



Light Spot size: 50cm at 150cm distance  
Variable Intensity: 15,000 to 30,000lux  
Battery Run Time: 3 hours at Maximum settings  
*Supplied with 2 x Li-Ion batteries.*

**\$1350+GST = \$1485**

LED Headlight set & 2.5 x Galilean Loupes	TA.LED-GL
LED Headlight set & 2.5 x N31 Loupes	TA.LED-N31

## A-Z of Surgery Equipment

*All those small equipment items you need for the day-to-day life of your Practice.*

### Handpiece Spray Oil

Suits all brands

MK Dent - 500ml can



Ref. MK.LU1011

for 1 Can

**\$40+gst = \$44**

for 4+ Cans

**\$36+gst = \$39.60ea**

### Refill for Handpiece Lubricator Machines

MK Dent - 500ml Bottle



Ref. MK.LU1031

for 1 Bottle

**\$75+gst = \$82.50**

for 4+ Bottles

**\$70+gst = \$77ea**

### Prophy Powder 300gm Bottle

In 3 different flavours!

Mint Flavour Ref. MK.PR1011

Lemon Ref. MK.PR1012

Strawberry Ref. MK.PR1013



for 1 Bottle

**\$55+gst = \$60.50**

for 4+ Bottles

**\$50+gst = \$55ea**

### Globes [for your Dental Light]

24v 150w

Ref. GR4070

- A-dec
- Eurodent
- Belmont IO9000



**\$38+gst = \$41.80**

12v 55w

Ref. GR4071

- Belmont 048
- Dabi Atlante Reflex



**\$27+gst = \$29.70**

24v 70w

Ref. GR4072

- Belmont IO5000



**\$45+gst = \$49.50**

17v 95w

Ref. GR4073

- Faro EDI
- Ritter Planetlite



**\$52+gst = \$57.20**

24v 150w

Ref. GR4074

- Faro S70
- Faro S90
- Faro S2000
- Ritter Starlite



**\$65+gst = \$71.50**

12v 50w

Ref. GR4075

- Sirona



**\$50+gst = \$55**

25v 150w

Ref. GR4076

- Pelton and Crane



**\$90+gst = \$99**

### Water Bottles

Suits most dental units

Heavy wall construction for safe use at regular water pressures.

Available in two sizes:

750ml

Ref. DC8128

**\$32+gst = \$35.20**

2 litre

Ref. DC8164

**\$41+gst = \$45.10**



### METASYS

#### Clean and Green CL Suction Line Cleaner

THE MOST COMPACT AND EASIEST TO USE SUCTION LINE CLEANER

Enzymatic action | Non Foaming | Easy Dispensing  
Material Friendly | Small Size | Economical

*From only 91c per day for proper disinfection & cleaning of your suction lines*



STARTER KIT — includes compact dispenser  
Includes solution for 100 applications  
(in one bottle)

**\$180+gst = \$198**

Ref. MS.60010301

REFILL KIT A — Large Set

Includes solution for 200 applications  
2 x 500ml CL bottles

**\$164+gst = \$181.50**

Ref. MS.60010302

REFILL KIT B — Small Set

Includes solution for 100 applications  
1 x 500ml CL bottle

**\$90+gst = \$99**

Ref. MS.60010303

### O-Ring Replacement Sets - For Handpieces



KaVo™ Connector

Ref. DC4728

**\$20+gst = \$22**



Sirona™ Connector

Ref. DC4735

**\$20+gst = \$22**



NSK™ Connector

Ref. DC4731

**\$20+gst = \$22**



W&H RototQuick™

Ref. DC4736

**\$14+gst = \$15.40**



Bien Air™ Connector

Ref. DC4733

**\$14+gst = \$15.40**



E type lowspeed motor

all brands (set of 3)

Ref. GR95-237x3

**\$20+gst = \$22**

### Gaskets for Handpiece connection



3 hole Bordern

Ref. DC0122

**\$6+gst = \$6.60**



4 hole Midwest

Ref. DC0123

**\$6+gst = \$6.60**



6 hole Fibre Optic

Ref. DC4710

**\$6+gst = \$6.60**

### For Ultrasonic Scalers



EMS handpiece

Ref. 3A.0

**\$3+gst = \$3.30**



Amdent handpiece

Ref. AM.HP-0

**\$6+gst = \$6.60**



Cavitron™ Tip (pk12)

Ref. GR95-228

**\$25+gst = \$27.50**

### DCI Triplex Syringes



Autoclavable Tip Type

Non autoclavable body

Ref. DC3439 - contra type

Ref. DC3459 - straight type

**\$195+gst = \$214.50**



Autoclavable Body Type

(excludes inner connector)

Ref. DC3370 - contra type

Ref. DC3350 - straight type

**\$230+gst = \$253**



Inner Connector

For autoclavable body syringe

Ref. DC3320 - contra type

Ref. DC3459 - straight type

**\$195+gst = \$214.50**

### Service Kits

For autoclavable tip syringe

Ref. DC3306 all types

**\$25+gst = \$27.50**

For autoclavable tip syringe

Ref. DC3072 contra type

Ref. DC3035 straight type

**\$28+gst = \$30.80**

### LED Replacements for Handpiece Globes

LED upgrades for your existing handpiece connector. Long Life! Brighter and Whiter Output!

Ref. GRBU8012

- for KaVo - Dabi Atlante

**\$75+gst = \$82.50**



Ref. GRBU8012N

- for NSK

**\$75+gst = \$82.50**



Ref. GRBU8012WH

- for W&H

**\$75+gst = \$82.50**



Ref. GRBU8012SB

- for Sirona

**\$75+gst = \$82.50**



*Curing light globes also available.  
Contact us for details*



## Vacuum Handpieces - Fully autoclavable - NEW MODELS

ALL METAL | EASY TO CLEAN | SMOOTH OPERATION | ANTI-DEBRIS PREVENTION



High Velocity Valve\*  
**Long Nose type**  
For 11mm/disposable tips  
**\$120+gst = \$132**  
Ref. DC5112



High Velocity Valve\*  
**Short Nose type**  
For 11mm/disposable tips  
**\$110+gst = \$121**  
Ref. DC5131



Saliva Ejector Valve\*  
**Short Nose type**  
For 6mm/disposable tips  
**\$99+gst = \$108.90**  
Ref. DC5222

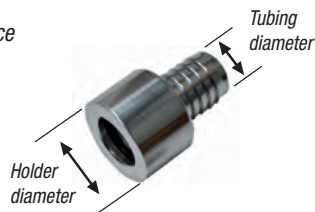
### Add the adapters to suit your dental system

\* above valves include the adapter of your choice

#### To suit US type dental units

High Velocity adapter  
for holder dia 22mm  
fits 12mm dia tubing  
**Ref. DC5107**

Saliva Ejector adapter  
for holder dia 16mm  
fits 5mm dia tubing  
**Ref. DC217**



#### To suit European type dental units

HVE adapter  
for holder dia 26mm  
fits 17-18mm dia tubing  
**Ref. DC5680**

HVE adapter  
for holder dia 28mm  
fits 22mm dia tubing  
**Ref. DC5684**

Saliva Ejector adapter  
for holder dia 20mm  
fits 11mm dia tubing  
**Ref. DC5681**

Saliva Ejector adapter  
for holder dia 18mm  
fits 10-11mm dia tubing  
**Ref. DC5683**



Saliva Ejector Tip  
fits most US-style valves  
**\$9+gst = \$9.90**  
Ref. GR30-074



Saliva Ejector Adapter  
fits any 11mm outlet  
**\$20+gst = \$22**  
Ref. GR30-088



Oral Rinse Cup  
Autoclavable  
fits 11mm outlet  
**\$26+gst = \$28.60**  
Ref. DC5840

## Stainless Steel Suction Tips

### Autoclavable

#### For High Volume Suction

11mm Ø kink type  
**Ref. GR30-440** 10cm  
**Ref. GR30-460** 15cm  
**\$36+GST = \$39.60**



#### For Surgical Aspiration

Curved with slot, 17.5cm  
**Ref. ZE.19.649.15** 1.5mmØ  
**Ref. ZE.19.649.30** 3mmØ  
**\$33+GST = \$36.30**



#### Adapter Surgical Aspirator

Fits 17mm or 11mm terminal  
**Ref. CA.C15**  
**\$10+GST = \$11.00**



## Cleaning Brushes for Suction Tips

Supplied in packet of 5

**Ref. GR95-300** - High Volume Tip

**Ref. GR95-302** - Surgical Tip  
**\$19.80+gst = \$21.78 each Pack of 5**



## Vacuum Handpieces - Plastic type



High Velocity Valve  
For 16mm tip - 17mm tubing  
Holder diameter 26mm  
**Ref. MS.40100006**  
**\$38+gst = \$41.80**



Low Velocity Valve  
For 11mm tip - 11mm tubing  
Holder diameter 20mm  
**Ref. MS.40100007**  
**\$35+gst = \$38.50**



Suction Adapter  
For 11mm tips to 16mm outlet  
**Ref. C160000**  
**\$5+gst = \$5.50**

## Vacuum Tubing



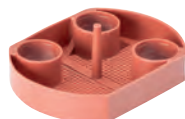
### Silicone Tubing

	suits European chairs	per metre
8.2mm inside dia*	<b>Ref. MS.40300019</b>	<b>\$59+GST = \$64.90</b>
11mm inside dia^	<b>Ref. MS.40300012</b>	<b>\$39+GST = \$42.90</b>
14.5mm inside dia*	<b>Ref. MS.40300020</b>	<b>\$59+GST = \$64.90</b>
15mm inside dia^	<b>Ref. MS.40300001</b>	<b>\$39+GST = \$42.90</b>
17mm inside dia	<b>Ref. MS.40300002</b>	<b>\$39+GST = \$42.90</b>
22mm inside dia	<b>Ref. MS.40300004</b>	<b>\$45+GST = \$49.50</b>

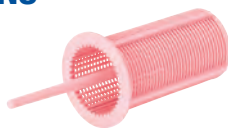
\* denotes suits Sirona

^denotes suits A-dec

## DENTAL UNIT FILTERS & SCREENS



Suction Line Filter  
Supplied in Packet of 10  
**Ref. DC6821**  
**\$39+GST = \$43.90**  
Suits Sirona C8 and Pelton & Crane units



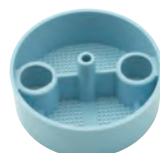
Suction Line Filter  
Supplied in Packet of 10  
**DC6818**  
**\$35+GST = \$38.50**  
Suits Adec Cascade and Performer units



Suction Line Filter  
Supplied in Packet of 10  
**DC5818**  
**\$28+GST = \$30.80**  
Suits Proma, Forest, Midmark and Dabi units



Suction Line Filter  
Supplied Individually  
**IV.072504100/1**  
**\$18+GST = \$19.80**  
Suits Ritter, Dürr and other European units



Suction Line Filter  
Supplied in Packet of 10  
**DC5817**  
**\$28+GST = \$30.80**  
Suits Adec Decade units



Suction Line Filter  
Supplied Individually  
**CA1130**  
**\$23+GST = \$25.30**  
Suits Ritter, Cattani and other European units



Cuspidor Filter & Screen  
Supplied in Packet of 10  
**DC5313**  
**\$35+GST = \$38.50**  
Filter diameter (top) 63mm  
Suits Belmont, Proma, Forest, Midmark and other US made dental units



Cuspidor Filter & Screen  
Supplied in Packet of 10  
**DC5314**  
**\$35+GST = \$38.50**  
Filter diameter (top) 40mm  
Suits Ritter, Sirona, KaVo, and other European made dental units



Brought to you by:  
**Ritter®**  
[ THE DENTAL EXPERTS ]



## The ARIA Smart Dental System

**Modern Design with a Full Range of Features**

- Slim Design Chair for better Patient access
- Hardened Glass Control Panels for optimal surface disinfection
- LED lowspeed Electric Motor
- LED ultrasonic scaler
- LED operating light
- with swivel Cuspidor & Assistant unit

*Choice of hanging tubing or continental delivery*

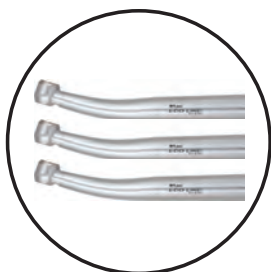


Complete ARIA Smart System

**\$27,200 + GST = \$29,920**

**Starting a new surgery?** Choose the ARIA Smart System in conjunction with the equipment set for the life of your practice.

**3 x MK Dent Highspeed  
Fibre-Optic Handpieces**  
*Made in Germany*



**Melag 31B Class B  
Autoclave**  
*Made in Germany*



**Dental Stools Set**  
*Made in Australia*



**Ritter Leadex X-Ray**  
*Made in Germany*



**3 x MK Dent Fibre Optic  
Lowspeed Handpieces**  
*Made in Germany*



**Metasys META Air 70  
Dental Compressor**  
*Made in Austria*



**Metasys Hybrid  
Centralised Suction**  
*Made in Austria*



Complete New Surgery Package  
ARIA system and all equipment listed  
**\$60,000 inc GST**

**OPTIONAL: Digital Imaging Upgrade**



**Dürr Vistascan Mini Plus PSP System  
add \$13,750 incl GST to package**