

The ARIA Smart Dental System

Brought to you by:
Ritter®
[THE DENTAL EXPERTS]



Modern Design with a Full range of Modern Features

- Patient Chair with left and right armrests
- Smooth Glass Panel Control System for optimal surface disinfection.
- LED Electric Lowspeed Motor with internal water
- LED ultrasonic scaler
- LED operating light
- With Cuspidor and Assistant Unit

*Choice of hanging tubing
or continental delivery
at no extra charge.*



Complete ARIA Smart System
\$26,800 +gst = \$29,480

Supported Australia Wide by
RITTER-POINT
DISTRIBUTION AND SUPPORT NETWORK

ACCUTRON Inc.

Advanced Nitrous Oxide Sedation Systems



ACCUTRON's
Flowmeter systems include
the State-of-the-Art **Digital
Ultra** flowmeter providing
enhanced administration
and monitoring, as well
as the **Ultra %PC** unit
that brings the flow tube
technology systems into
modern standards of
infection control
combined with
total failsafe
standards.

SEE PAGE 8



SEE PAGES 8-9

ACCUTRON's award winning **Clearview Hoods**
incorporate a double hood design with a clear
outer hood, with a range of colours and scented
hoods to assist in overcoming patient anxiety.
Able to fit your existing Tubing Set.



From Helmut Zepf, Germany's leading dental instrument maker, the revolutionary BIONIK system gives you the ultimate flexibility of interchangeable handles and Curette inserts.

Zepf Bionik Inserts are available either as a Complete Instrument or each section individually; **with the added advantage and economy of replacing a worn section** as opposed to the entire instrument.

Gracey 1/2 Special Curette Complete
Order Ref. ZE.24.201.01G



Insert Gracey #1
Ref.ZE.24.751.101G

Front Teeth

Insert Gracey #2
Ref.ZE.24.751.102G

Gracey 3/4 Special Curette Complete
Order Ref. ZE.24.202.03G



Insert Gracey #3
Ref.ZE.24.751.103G

Front Teeth / Premolars

Insert Gracey #4
Ref.ZE.24.751.104G

Gracey 5/6 Special Curette Complete
Order Ref. ZE.24.203.05G



Insert Gracey #5
Ref.ZE.24.751.105G

Front Teeth / Premolars

Insert Gracey #6
Ref.ZE.24.751.106G

Gracey 7/8 Special Curette Complete
Order Ref. ZE.24.205.07G



Insert Gracey #7
Ref.ZE.24.751.107G

**Front Teeth / Premolars /
Buccal / Lingual**

Insert Gracey #8
Ref.ZE.24.751.108G

Gracey 9/10 Special Curette Complete
Order Ref. ZE.24.206.09G



Insert Gracey #9
Ref.ZE.24.751.109G

Premolars / Molars

Insert Gracey #10
Ref.ZE.24.751.110G

Gracey 11/12 Special Curette Complete
Order Ref. ZE.24.204.11G



Insert Gracey #11
Ref.ZE.24.751.111G

**All Mesial Surfaces
Premolars / Molars**

Insert Gracey #12
Ref.ZE.24.751.112G

Gracey 13/14 Special Curette Complete
Order Ref. ZE.24.207.13G



Insert Gracey #13
Ref.ZE.24.751.113G

**All Distal Surfaces
Premolars / Molars**

Insert Gracey #14
Ref.ZE.24.751.114G

Gracey 15/16 Special Curette Complete
Order Ref. ZE.24.204.15G



Insert Gracey #15
Ref.ZE.24.751.115G

**All Mesial Surfaces
Premolars / Molars**

Insert Gracey #16
Ref.ZE.24.751.116G

Gracey 17/18 Special Curette Complete
Order Ref. ZE.24.207.17G



Insert Gracey #17
Ref.ZE.24.751.117G

**Distal Surfaces / Deep
Pockets**

Insert Gracey #18
Ref.ZE.24.751.118G

Columbia 2R/2L Curette Complete
Order Ref. ZE.24.207.02C



Insert Columbia 2R
Ref.ZE.24.751.102RC

**Universal Use
Front Teeth**

Insert Columbia 2L
Ref.ZE.24.751.102LC

Columbia 13/14 Curette Complete
Order Ref. ZE.24.207.13C



Insert Columbia 13
Ref.ZE.24.751.113C

Universal Use

Insert Columbia 14
Ref.ZE.24.751.114C

Columbia 4R/4L Curette Complete
Order Ref. ZE.24.207.04C



Insert Columbia 4R
Ref.ZE.24.751.104RC

Universal Use Side Teeth

Insert Columbia 4L
Ref.ZE.24.751.104LC

McCall 13S/14S Curette Complete
Order Ref. ZE.24.207.13MC



Insert McCall 14S
Ref.ZE.24.751.114MC

**Interdental Spaces
Front Teeth & Premolars**

Insert McCall 13S
Ref.ZE.24.751.113MC

McCall 17S/18S Curette Complete
Order Ref. ZE.24.207.17MC



Insert McCall 17S
Ref.ZE.24.751.117MC

Universal Use Molars

Insert McCall 18S
Ref.ZE.24.751.118MC

Langer # L 1/2 Curette Complete
Order Ref. ZE.24.210.01L



Insert Langer L2
Ref.ZE.24.751.102L

**Universal Use
Premolars & Lower Molars**

Insert Langer L1
Ref.ZE.24.751.101L

Langer # L 3/4 Curette Complete
Order Ref. ZE.24.208.03L



Insert Langer L4
Ref.ZE.24.751.104L

**Universal Use
Premolars & Upper Molars**

Insert Langer L3
Ref.ZE.24.751.103L

Langer # L 5/6 Curette Complete
Order Ref. ZE.24.201.05L



Insert Langer L6
Ref.ZE.24.751.106L

**Universal Use
Lower & Upper Front Teeth**

Insert Langer L5
Ref.ZE.24.751.105L

M23 Special Scaler Complete
Order Ref. ZE.24.207.23



Insert M23R
Ref.ZE.24.751.123R

**Lower & Upper Side Teeth
Supra-gingival Plaque**

Insert M23L
Ref.ZE.24.751.123L

Buy 8, Get 1 Free

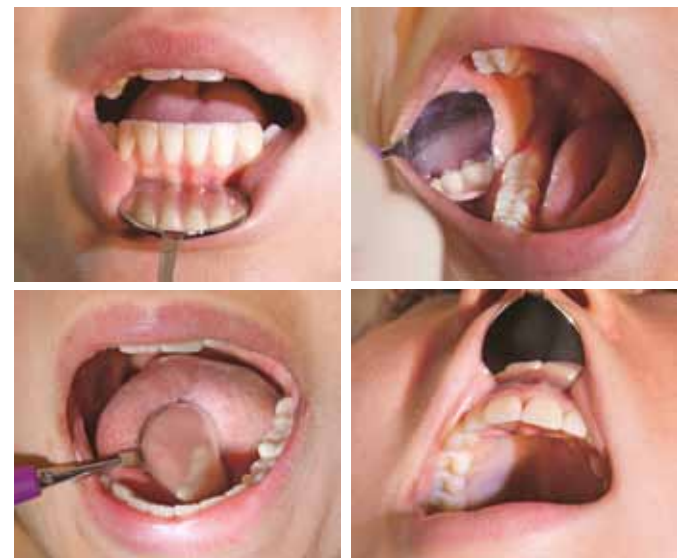
Complete Curette / Scaler
\$54.00+GST = \$59.40

Exchangeable Insert Curette / Scaler
\$25.80+GST = \$28.38

WITH THE ADDED ADVANTAGE AND ECONOMY OF REPLACING A WORN SECTION AS OPPOSED TO THE ENTIRE INSTRUMENT



In Addition to the BIONIK Scaler system, the revolutionary Retractor and Mouth Mirror provides an ease of Retraction and Viewing Access never before possible.



Retractor Mirror & Universal Handle

27mm mirror width with
Purple Handle order ref. ZE.24.062.31

24mm mirror width with
Orange Handle order ref. ZE.24.062.30

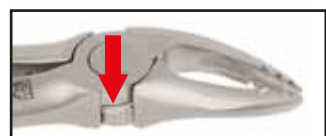
Complete Retractor / Mirror
\$48.00+GST = \$52.80



Replacement Retractor Mirrors

27mm width order ref. ZE.37.448.10
24mm width order ref. ZE.37.448.20

Replacement Retractor / Mirror
\$27.00+GST = \$29.70



Zepf Forceps include a wear resistant Teflon disc to eliminate wear and tear in the joint and ensures smooth long term use.

Xcision

Dr Maty Design

With exclusive design and 25% reduced weight, Xcision Instruments are lighter and stronger than any other forceps.

The hygienic and ergonomic handle design enables uniform power transmission during pressing, pulling and rotary movements and is equally suited for both right and left handed practitioners.

Extraction Forceps Fig.2
English Pattern ASH
Upper Incisors & Eye Teeth
Order Ref. ZE.12.002.00Z
\$145+gst = \$159.50

Extraction Forceps Fig.67A
English Pattern ASH
Wisdom Teeth
Order Ref. ZE.12.067.01Z
\$150+gst = \$165

Extraction Forceps Fig.79
English Pattern ASH
Lower Wisdom Teeth Modified
Order Ref. ZE.12.079.95Z
\$191+gst = \$210.10

Extraction Forceps Fig.45SB
English Pattern ASH
Lower Jaw Roots
Order Ref. ZE.12.045.15Z
\$191+gst = \$210.10

Extraction Forceps Fig.18
English Pattern ASH
Upper Left Wisdom & Eye Teeth
Order Ref. ZE.12.018.00Z
\$145+gst = \$159.50

Extraction Forceps Fig.13
English Pattern ASH
Lower Premolars
Order Ref. ZE.12.013.00Z
\$145+gst = \$159.50

Extraction Forceps Fig.35
English Pattern ASH
Upper Premolars, Special Beaks
Order Ref. ZE.12.035.07Z
\$173+gst = \$190.30

Extraction Forceps Fig.59
English Pattern ASH
Order Ref. ZE.12.059.00Z
\$191+gst = \$210.10

Extraction Forceps Fig. 44
English Pattern Ash
Upper Jaw Roots
Order Ref. ZE.12.044.15Z
\$198+GST = \$217.80



Conventional Forceps **Zepf Xcision Forceps**
The special taper beak design of Zepf Forceps provide improved subgingival placement for reduction of root fractures and atraumatic results.



Visit
zepfdental.com.au
for all types available

Zepf X-Luxa Tool Instruments

Implantology with immediate insertion after tooth extraction is becoming a large focus of modern dentistry. As a result it is vital to preserve hard and soft tissue structures during the extraction phase and to follow the principles of minimal invasiveness.

Watch the Video and get full details at
www.zepfdental.com.au/x-tool

In contrast to existing instruments the Zepf X-Tool Set supports the gentle and uncomplicated extraction of teeth that cannot be preserved.



X Luxa Tool Straight 2.5mm
Front Teeth and upper jaw
Order Ref. ZE.12.007.01

X Luxa Tool Curved 2.5mm
Lower jaw
Order Ref. ZE.17.007.03

X Luxa Tool Straight 4.0mm Spade
Initial loosening of the desmodontal fibres
Order Ref. ZE.17.007.05

X Luxa Tool Straight 4.5mm
Front Teeth and upper jaw
Order Ref. ZE.12.007.02

X Luxa Tool Curved 4.5mm
Lower jaw
Order Ref. ZE.17.007.04

\$115+GST = \$126.50ea

Lucas Scraper. Inspection and curettage of the empty alveolus and complete removal of inflamed and connective tissue fibres.

Order Ref. ZE.41.855.01Z **\$90+gst = \$99**



Scaler Handpiece & Tip Set

NOW AVAILABLE IN COMPATIBLE VERSIONS FOR EMS™ OR SATELEC™!!

Improved scaler handpiece now utilises PEEK plastic for increased autoclavability and durability.

Scaler Handpiece: \$380 +gst = \$418

For EMS compatible - Ref No. DM.SHP

For Satelec compatible - Ref. No. WP.DTEHP

Scaler Handpiece & Tip Set: \$520 +gst = \$572

For EMS compatible - Ref No. DM.SHP-K

For Satelec compatible - Ref. No. WP.DTEHP-K

COMPRISING: - 1 x handpiece - 2 x 'A' style tips

- 1 x 'P' style tip - 1 x 'PS' style tip - 4 x tip tools



**BUY 3
GET 1 FREE**

Tip Tool

- Compatible with EMS and Satelec tips
- Ensures correct tip tightness
- Autoclavable up to 135°C

Ref. WP.TW-2L

\$27 +gst = \$29.70



Tip stays connected inside tool after removal

**BUY 3
GET 1 FREE**

dmetec Ultrasonic Scaler



The Dmetec ultrasonic scaler is compact in size and suitable for all types of scaling and periodontic applications. Available in portable benchtop version or built-in system for integration into your dental unit. Comes with 3 tips!

Ref. DM.SSBS for Built-In system

\$800 +gst = \$880

Ref. DM.SSPS for Benchtop system

\$890 +gst = \$979

**COMPATIBLE WITH
EMS™ SCALERS**

**LED OPTIC
VERSIONS
ALSO
AVAILABLE**

Scaler Tips: for EMS™, Satelec™ & Sirona™ Scalers

**BUY 3
GET 1 FREE**

'A' Style Universal Tip



Removes calculus on supra-gingival, neck of teeth & hard calculus on teeth point.

for EMS style Ref. WP.G4

for Satelec style Ref. WP.GD4

for Sirona style Ref. WP.GS4

\$27 +gst = \$29.70

'P1' Style Universal and Sub-Gingival



Removes supra and sub-gingival calculus

for EMS style Ref. WPP1

for Satelec style Ref. WPPD1

for Sirona style Ref. WPPS1

\$33 +gst = \$36.30

'P' Style Universal and Sub-Gingival



Removes supra, sub-gingival and inter-dental calculus

for EMS style Ref. WPG3

for Satelec style Ref. WPGD3

for Sirona style Ref. WPGS3

\$34 +gst = \$37.40

'PS' Style Universal and Sub-Gingival



Removes sub-gingival, periodontal and deep pocket calculus

for EMS style Ref. WPP3

for Satelec style Ref. WPPD3

for Sirona style Ref. WPPS3

\$41 +gst = \$45.10

LED Curing Light

Powerful Output | Smart Design

With a slim pencil shaped design, the DY400-6 LED curing light is easy to use with convenient features.

- High Output 1,400mw/cm²
- Lithium Battery for 40 minutes continuous use
- Audible tone at 5 second intervals
- 2 curing modes
- Fast mode
- Ramp up to full power
- Built in light meter

**NEW
MODEL!**



The smart control button and display are offset to remain visible when holding the light during curing procedures



Order ref. DJ.DY400-6

\$360 +gst = \$396

Children's Forceps

ZEPP
roba
EDITION
PATENTED



The Patented Milk Teeth RoBa-Edition Forceps as designed by Dr Beck of Switzerland, incorporate the design of conventional extracting forceps with the advantages of tapered deep-grip beaks that fit exactly onto the tooth for maximum grip during extraction.



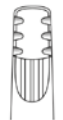
Order ref. ZE.10.685.29



Order ref. ZE.10.685.07



Order ref. ZE.10.685.33



Order ref. ZE.10.685.22



Order ref. ZE.10.685.51



Order ref. ZE.10.685.52



Zepf Children's Forceps - each
\$125.00+GST = \$137.50

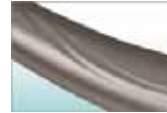
MK-dent®
GERMANY

*Now Available from
Gritter Dental*

Prime Line: Titanium Coated Highspeed



Quiet operation
only 55dBa



Ergonomic Grip
Titanium Coated



4 or 3 Spray
Different heads



Integrated
Non Return valve



Power Head size - 20W power

For KaVo connector type	Fibre optic
For Sirona connector type	Fibre optic
For NSK connector type	Fibre optic
For W&H connector type	Fibre optic

order ref. MK.HC9021K
order ref. MK.HC9021S
order ref. MK.HS9021NT
order ref. MK.HC9021W

Small Head size - 18W power

For KaVo connector type	Fibre optic
For Sirona connector type	Fibre optic
For NSK connector type	Fibre optic
For W&H connector type	Fibre optic

order ref. MK.HC9022K
order ref. MK.HC9022S
order ref. MK.HS9022NT
order ref. MK.HC9022W

Buy 3, get 1 FREE!

\$1,150 +gst = \$1,265

Eco Line: Highspeed



Ceramic bearings
On all Models



Smooth Ergo
grip



4 Spray Outlet
Different heads



Solid Glass Optics
40,000 lux output

Compatible with KaVo® type handpiece connections



Power Head size - 20W power

For KaVo connector type	Fibre optic
For KaVo connector type	Non optic

order ref. MK.HE21KL
order ref. MK.HE21K

Small Head size - 18W power

For KaVo connector type	Fibre optic
For KaVo connector type	Non optic

order ref. MK.HE22KL
order ref. MK.HE22K

For Fibre Optic type	for 1	\$595+gst = \$654.50
	For 3+	\$540+gst = \$594ea
For Non Optic type	for 1	\$495+gst = \$545.50
	For 3+	\$450+gst = \$495ea



MK-dent[®]
G E R M A N Y

Dental Handpieces

Lowspeed - 40,000rpm with Water Spray

Optic or Non-Optic | Internal Water Spray | E Type Connection



1:1 Ratio Contra Angle Handpiece

Fibre Optic Order Ref. MK.LE11L

\$725+gst = \$797.50

Non Optic Order Ref. MK.LE11

\$600+gst = \$660



2:1 Reduction Ratio Contra Angle Handpiece

Fibre Optic Order Ref. MK.LE12L

\$725+gst = \$797.50

Non Optic Order Ref. MK.LE12

\$600+gst = \$660

Airmotors for Lowspeed

Optic w/water



LED Optic Airmotor – Internal water connection

Compact | High Torque | E type water connection | Variable Speed

Fits all ISO E type Handpieces - 6 hole Midwest connection

Order Ref. MK.AM1016 for 1 **\$1,170+gst = \$1,287**

Non-Optic



Non Optic Airmotor – External water connection

Compact | High Torque | Irrigation Spout | Variable Speed

Fits all E type Handpieces - 4 hole Midwest connection

Order Ref. MK.AM0014 for 1 **\$350+gst = \$385**

PROPHY Line - Tooth Polishing System

Light Weight & Compact | 360 Degree Rotation | Autoclavable

See Page 14 for MK Dent Prophy Powder



Before PROPHY Line

After PROPHY Line

Available with connection to these brands couplings:

for KaVo connector type Order Ref. MK.PR1011K

for Sirona connector type Order Ref. MK.PR1011S

for NSK connector type Order Ref. MK.PR1011N

for W&H connector type Order Ref. MK.PR1011W

\$1,250+gst = \$1,375

Basic Line Lowspeed - Non Optic

All Basic pieces are compatible with NSK® brand attachments



1:1 ratio pushbutton head
for CA burs

Order Ref. MK.LS0091

\$220+gst = \$242



Prophy head
for snap-on & screw-in cups

Order Ref. MK.LS0095

\$150+gst = \$165



1:1 Ratio Contra Angle Handpiece with Push Button Head

Order Ref. MK.LS0031 for 1

\$350+gst = \$385

for 3+

\$320+gst = \$352ea



4:1 Ratio Contra Angle Handpiece FOR PROPHY

Order Ref. MK.LS0035 for 1

\$350+gst = \$385

for 3+

\$320+gst = \$352ea

1:1 Ratio Contra Angle Handpiece FOR PROPHY

Order Ref. MK.LS21/95 for 1

\$270+gst = \$297

for 3+

\$250+gst = \$275ea



1:1 ratio straight handpiece

Order Ref. MK.LS0012 for 1

\$350+gst = \$385

for 3+

\$320+gst = \$352ea

Handpiece Couplings

for NSK® connection type



Fibre Optic LED Order Ref. MK.QC601NT

\$350+gst = \$385

for KaVo® connection type



Fibre Optic LED Order Ref. MK.QC6016K

\$450+gst = \$495

Non Optic

Order Ref. MK.4014K

\$260+gst = \$286

for W&H® connection type



Fibre Optic

Order Ref. MK.QC5016W

\$350+gst = \$385

Non Optic

Order Ref. MK.4014K

\$260+gst = \$286



Digital Ultra Systems



Accutron's Digital Ultra Flowmeter is the right choice for clinicians who prefer to work in a digital environment but want critical parameters displayed both numerically and as electronic flow tubes. The ease of color-coded, fingertip controls is an additional feature of the flowmeter.

A smooth front fascia enhances infection control practice by allowing barrier protection. The unit's design complements aseptic and contemporary operatory environments.

Automatic Calibration – adjust total flow while gas % remains constant, adjust gas % and total.

- Flow remains constant
- Digital and Electronic Gas Flow Displays
- Microprocessor Technology; Instant response to adjustments
- N2O Ratio Control – min. 30% O2 total flow
- Audible and Visual (LED) Low O2 alarms
- Oxygen Fail-safe; Oxygen Flush
- Sealed Membrane Switch Technology – easy to clean for disinfection or barrier protection
- Optional Remote Control
- Optional Printer – records gas delivery during patient treatment.



Complete Digital Ultra Mobile System

w/ Clearview Scavenging Hood Circuit*

\$7,200+GST = \$7,920

Add Regulators for Cylinders
Needed for surgeries new to Nitrous Oxide Sedation

\$720+GST = \$792

Flowmeters - Complete Systems

Ultra PC% Systems



Accutron's Ultra PC % Flowmeter is designed for the practitioner who demands precision control, consistent performance and state-of-the-art innovation within an easy to use and compact analog flowmeter.

The unit combines efficient operation with optimal safety, and its smooth appearance complements both infection control disinfection with modern operatory aesthetics.

Easy operation—simply set the N2O% and control the total flow rate with a single control.

- Single-knob Total Flow Control
- N2O Ratio Control – min. 30% Oxygen
- Oxygen Fail-safe
- Oxygen Flush
- Oxygen Resuscitation Connector
- Emergency Air Valve
- Directional Check Valve



Complete Ultra PC% Mobile System

w/ Clearview Scavenging Hood Circuit*

\$6,200+GST = \$6,820

Add Regulators for Cylinders
Needed for surgeries new to Nitrous Oxide Sedation

\$720+GST = \$792

Visit
www.nitrous-sedation.com.au
For all about Nitrous Oxide Sedation for Dentistry.



Accutron Nitrous Oxide Sedation Systems are available in Cabinet Mounted Systems in a range of configurations to suit both Single & Multiple Surgery Environments.

Contact Us for Details

Telephone: 02 9153 6700 | Email: office@ritterdental.com.au



Scavenging Hoods and Tubing Sets



Clearview Nasal Hoods



Accutron's Clearview Scavenging Hood System incorporate a double hood with a transparent outer hood, allowing the doctor to monitor the patient's breathing for increased safety. Combined with scented hoods, Clearview combined with N2O reduces patient anxiety for treatment.

PIP+ Nasal Hoods

With perfect fit and comfort, the quality PIP+ hood combined with clear scavenging cone and adjustable vacuum scavenging control of the tubing circuit, minimises the gas mixture from escaping and contaminating the air in the surgery. PIP+ hoods are available in autoclavable hoods or single use scented hoods.



Clearview Hood fitted to Matrix set
No more Scavenging Cone to fit!



Clearview Hood fitted to Porter set
No Converter Kit needed!



PIP+ Hood fitted to Matrix set
Clear Scavenging Cone easier to fit!



PIP+ Hood fitted to Porter Set
Autoclavable & Disposable flexibility

Replacement Sets and Hoods for Accutron and other Brand RA Systems

Accutron Scavenging Tubing Sets

Upgrade your existing Nitrous Oxide System to the newest & most effective Scavenging Set.



AWARD WINNER

Choice of Clearview Single Use Hoods or PIP+ autoclavable hood. Reservoir Bag, and vacuum control valve incl.

\$980+GST = \$1,078 Ref.AC43003
for set - 12 x Clearview Single Use Hoods

\$990+GST = \$1,089 Ref.AC32007A
for set - 1 x PIP+ Autoclavable Hood



Reservoir Breathing Bags

- Latex Free
- Fits All Brands

\$60+GST = \$66
3 litre capacity Ref. AC.33025
2 litre capacity Ref. AC.33026

All Accutron Hoods and Tubing Sets are 100% Latex Free

Clearview Hoods



- Fits Accutron Scavenging Sets
- Fits Porter™ Scavenging Sets
- Fits Matrix™ Scavenging Sets*

Single Use Hoods - Set of 12

Adult Size \$99+GST = \$108.90
Unscented Ref. AC.33035-9
Orange Scent Ref. AC.33035-10
Vanilla Scent Ref. AC.33035-14
Mint Scent Ref. AC.33035-16

Pedo Size \$99+GST = \$108.90
Orange Scent Ref. AC.33037-10
Strawberry Scent Ref. AC.33037-16
Bubblegum Scent Ref. AC.33037-12
Grape Scent Ref. AC.33037-17

Converter Kits for
Porter™ & Matrix™
Tubing Sets

NO CHARGE

For Clearview Hood
For Porter Tubing Set No Adapter Needed
For Matrix Tubing Set Ref. AC.35360

For PIP+ Hood
For Porter Tubing Set Ref. AC.35000
For Matrix Tubing Set Ref. AC.35000M
For ANS Tubing Set Ref. AC35325



PIP+ Hoods



- Fits Accutron PIP+ Tubing Sets
- Fits Porter™ Scavenging Sets*
- Fits Matrix™ Scavenging Sets*

Single Use Hoods - Set of 24

Large Size \$180+GST = \$198
Variety Set Ref. AC.33015-3
Mint, Peach and Vanilla Scents

Medium Size \$170+GST = \$187
Variety Set 1 Ref. AC.33016-1
Orange, Strawberry & Bubblegum Scents
Variety Set 2 Ref. AC.33016-3
Mint, Peach and Vanilla Scents

Small Size \$160+GST = \$176
Variety Set Ref. AC.33017-1
Orange, Strawberry & Bubblegum Scents

Autoclavable Hood



Multiple Use

Large Size \$190+GST = \$209
Ref. AC.33018

Medium Size \$180+GST = \$198
Ref. AC.33019

Small Size \$170+GST = \$187
Ref. AC.33020

The Ultimate in Patient Comfort

Now available by Popular demand, the complete CRESCENT range!

All Crescent Products are available in **GREEN** or **BEIGE** or **GREY**



BEST SELLER



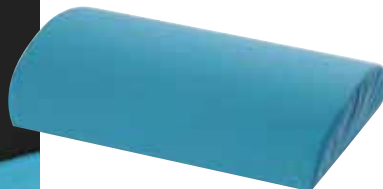
Crescent Patient Pillow

Is your dental chair giving your patients a headache?

By molding itself around the patient's head and neck, the Patient Pillow gives great comfort PLUS excellent patient positioning.

Ref. CR.DP50 for Green
Ref. CR.DP55 for Beige
Ref. CR.DP52 for Grey

\$108 +gst = \$118.80



Crescent Backrest

By supporting the lower lumbar area that many dental chairs neglect, your patient will feel far more relaxed and comfortable during prolonged procedures.

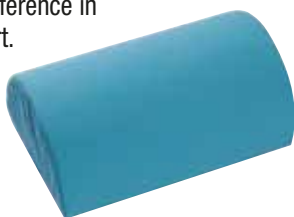
Ref. CR.DP60 for Green
Ref. CR.DP65 for Beige
Ref. CR.DP62 for Grey

\$120 +gst = \$132

Crescent Knee Support

Your patients will feel an amazing difference in comfort while using the Knee Support.

By allowing the legs to lie in this natural position, pressure is relieved from the lower back and hips.



Ref. CR.DP90 for Green
Ref. CR.DP95 for Beige
Ref. CR.DP92 for Grey

\$140 +gst = \$154

U-Shape Neck Support

Perfect for sedation dentistry.

Provides stable support for patient head and neck, both during the procedure and for post-operative recovery.



Ref. CR.DP515 for Green
Ref. CR.DP516 for Beige
Ref. CR.DP512 for Grey

\$140 +gst = \$154

Crescent Booster Seat

Position your little patients properly! The Booster seat raises the height of the child providing greater patient access for all dental treatment.

Recommended for use with the Patient Pillow to assist in proper positioning for the head and neck.



BEST SELLER



Booster Seat Only

\$290 +gst = \$319

Ref. CR.DP80 for Green
Ref. CR.DP85 for Beige
Ref. CR.DP82 for Grey

Booster Seat and Pillow Set

\$360 +gst = \$396

Ref. CR.DP80/50 for Green
Ref. CR.DP85/55 for Beige
Ref. CR.DP82/52 for Grey

MELAG

Medizintechnik - made in Germany

Premium Class B Sterilisation – from just 12 minutes!



Melag's 40 series of Vacuklav Class B Autoclaves are a generation ahead. The dual chamber design provides for steam 'on demand' that significantly reduces sterilisation time.

Better Speed: Class S cycles only 8 minutes + drying time**
Class B cycles only 12 minutes + drying time**

Better Design: The large high quality display shows all function and status information on a clear and well organised screen—for intuitive operation.

Able to be connected directly to your plumbing.
No more manual filling and draining.

Built-in ability to digitally record Sterilisation Cycles!
With Network connection + CF card system integrated.

Premium Series come in a range of sizes to suit your surgery:

Capacity 18 litres

Vacuklav 40B - for external water (auto fill+drain**) with 5 trays **\$12,500 +gst = \$13,750**
INCLUDES MELADEM 40 WATER FILTER SYSTEM

Vacuklav 41B - stand alone (internal water tank) with 5 trays **\$12,700 +gst = \$13,970**

Capacity 22 litres

Vacuklav 43B - stand alone (internal water tank) with 5 trays **\$13,380 +gst = \$14,718**

Vacuklav 44B - for external water (auto fill+drain**) with 5 trays **\$13,600 +gst = \$14,960**
INCLUDES MELADEM 40 WATER FILTER SYSTEM

** For 40B and 44B units to be connected to external water connection, plumbing connections for mains water + waste are required.

MELAG

Pro Class B Sterilisation



With fractionated pre- and post vacuuming, the Pro Class Vacuklav provides an easy to use and compact Class B autoclave, with the inclusion of either printer or CF card based data logger.

With a range of programmes to suit every application, Pro Class B is the cost effective choice for Evidence based Sterilisation.

Capacity 18 litres

Vacuklav 31B - stand alone (internal water tank)
\$9,900 +gst = \$10,890

Capacity 22 litres

Vacuklav 23B - stand alone (internal water tank)
\$10,200 +gst = \$11,220

GRITTER DENTAL Dental Stools

*Especially made for
Australian dentists*

**Superior
Quality**

- Extremely flexible and comfortable
- Ergonomic support to minimise the problem of dentist's back pain



Dentists Stool

Fully adjustable seat and supportive backrest.

Order Ref. GR1102 **\$750+gst = \$825**



Assistant Stool

Fully adjustable seat and rotating belly bar
Includes supportive backrest

Order Ref. GR2103 **\$800+gst = \$880**

LOOKING FOR THE EFFECTIVE AMALGAM SEPARATION SOLUTION IN YOUR PRACTICE?



THE CENTRAL AMALGAM SEPARATOR FOR DENTAL CLINICS

INNOVATIVE – The simple solution to your dental practice's amalgam retention needs.

EFFICIENT – 99.5% amalgam retention rate with no electrical connection needs.

ISO 11143 CERTIFIED – verified by independent testing for use world-wide.

From only: \$1,485 incl GST*
(plus installation) * For surgeries with 1-2 operatories

SUITS MOST SUCTION TYPES
EASY TO INSTALL | EASY TO MAINTAIN

Dental Handpiece Cart

Lightweight for flexibility and mobility, the DC4511 dental cart comprises 3 way syringe and three handpiece lines.

Includes fibre optic highspeed line.

Full range of system extensions including lowspeed motor, ultrasonic scaler etc.



\$4,990+gst = \$5,489



METASYS

DENTAL COMPRESSORS

Made in Austria, Metasys' META Air combine compact size with the full features required for a dental compressor to suit all surgery environments.

All Metasys META Air compressors are oil-free and combine a Membrane Air dryer with 0.01um filter to ensure pure dry air is provided to your dental surgery.

COMPARE | PRICE | QUALITY | DURABILITY | PERFORMANCE

For 1 surgery
META Air 70
Output 70L/min @ 5bar
Ref.MS.03020002
\$4,500+gst = \$4,950

For 2-3 surgeries
META Air 150
Output 150L/min @ 5bar
Ref.MS.030320004
\$5,600+gst = \$6,160

For 3-4 surgeries
META Air 250
Output 225L/min @ 5bar
Ref.MS.03020006
\$6,900+gst = \$7,590



Made in AUSTRIA

Special Metasys Pricing Offers

Contact us for special offers on Compressor & Suction Systems
SAVE UP TO 15%



METASYS EXCOM

CENTRALISED SUCTION

METASYS EXCOM is the reliable partner for providing suction performance whilst remaining inconspicuously in the background. Providing strong & consistent suction without the need for complicated technology or overstressed componentry.

For 1 surgery
Output 0.75kW 4.5A
Hybrid 1 Ref. MS.020101531
\$2,450+gst= \$2,695
With ISO amalgam retention add: **\$1,320**

For 2 to 3 surgeries
Output 1.0kW 6.5A
Hybrid 2 Ref. MS.02010201
\$4,980+gst= \$5,478
With ISO amalgam retention add: **\$1,320**

For 3 to 5 surgeries
Output 1.4kW 9.52A
Hybrid 5 Ref. MS.02010202
\$6,300+gst= \$6,930
With ISO amalgam retention add: **\$1,375**

METASYS EXCOM Systems incorporate familiar Metasys quality.

- **Strong & Consistent Suction**
- **Reliable Performance**
- **Quality Construction**



Made in AUSTRIA



Dental Loupes

High Quality | Clear Image | Clarity | Large Range | Comfortable Design

2.5x Galilean Loupes

\$490 +GST = \$539



2.5x is the most popular model. It offers the widest field of view and longest depth of focus. It has excellent clear view and great optical capability to provide the operator with the optimal magnification while providing extended field of view.

Available in 2 versions	NG.250R	NG.250L
Magnification	2.5 X	2.5 X
Working Distance	420mm	500mm
Depth of View	90mm	110mm
Field of View	100mm	110mm
Weight (with frames)	77 grams	77 grams



2.5x magnification are also available in a Clip-on version, for dentists wishing to use their existing eyeglass frames. Same characteristics as standard 2.5x Loupes (see above).

Simply specify 'clip on type' when ordering



Clip-On 2.5x

\$400 +GST = \$440

3.0x Galilean Loupes

\$490 +GST = \$539



3.0x is designed for dentists who need more magnification, whilst maintaining good field of view and depth of focus. All Galilean Loupes incorporate comfortable Ni-alloy frames with adjustable gel nose bridge.

Available in 2 versions	NG.300R	NG.300L
Magnification	3.0 X	3.0 X
Working Distance	420mm	500mm
Depth of View	80mm	90mm
Field of View	80mm	90mm
Weight (with frames)	80 grams	80 grams



3.0x magnification are also available in a Clip-on version, for dentists wishing to use their existing eyeglass frames. Same characteristics as standard 3.0x Loupes (see above).

Simply specify 'clip on type' when ordering



Clip-On 3.0x

\$400 +GST = \$440

3.5x Galilean Loupes

\$540 +GST = \$594



3.5 x is the highest magnification available in Galilean Loupes, being suitable for specialist work within a smaller depth of view, while maintaining extended field of view.

Available in 2 versions	NG.350R	NG.350L
Magnification	3.5 X	3.5 X
Working Distance	420mm	500mm
Depth of View	80mm	90mm
Field of View	60mm	65mm
Weight (with frames)	87 grams	87 grams

LED Headlight & Loupes Set

Clear Image | Comfortable Design | Quality

2.5x Galilean Loupe Set

- choice of working distance of 42cm or 50cm
- light weight with Titanium frames
- Rechargeable lithium battery with up to 7 hour operating life between charges.
- Light output up to 30,000 lux.

Headlight & Loupes Set

\$1,080 +GST = \$1,188



A-Z of Surgery Equipment

All those small equipment items you need for the day-to-day life of your Practice.

Handpiece Spray Oil

Suits all brands

MK Dent - 500ml can



Ref. MK.LU1011

for 1 Can
\$40+gst = \$44

for 4+ Cans
\$36+gst = \$39.60ea

Refill for Handpiece Lubricator Machines

MK Dent - 500ml Bottle



Ref. MK.LU1031

for 1 Bottle
\$75+gst = \$82.50

for 4+ Bottles
\$70+gst = \$77ea

Prophy Powder 300gm Bottle

In 3 different flavours!

Mint Flavour Ref. MK.PR1011

Lemon Ref. MK.PR1012

Strawberry Ref. MK.PR1013



for 1 Bottle

\$55+gst = \$60.50

for 4+ Bottles

\$50+gst = \$55ea

Water Bottles

Suits most dental units

Heavy wall construction for safe use at regular water pressures.

Available in two sizes:

750ml Ref. DC8128
\$32+gst = \$35.20

2 litre Ref. DC8164
\$41+gst = \$45.10



METASYS

Clean and Green CL Suction Line Cleaner

THE MOST COMPACT AND EASIEST TO USE SUCTION LINE CLEANER

Enzymatic action | Non Foaming | Easy Dispensing
Material Friendly | Small Size | Economical

From only 91c per day for proper disinfection & cleaning of your suction lines



STARTER KIT — includes compact dispenser
Includes solution for 100 applications
(in one bottle)

\$180+gst = \$198
Ref. MS.60010301

REFILL KIT A — Large Set
Includes solution for 200 applications
2 x 500ml CL bottles

\$164+gst = \$181.50
Ref. MS.60010302

REFILL KIT B — Small Set
Includes solution for 100 applications
1 x 500ml CL bottle

\$90+gst = \$99
Ref. MS.60010303

O-Ring Replacement Sets - For Handpieces



KaVo™ Connector
Ref. DC4728
\$20+gst = \$22

Sirona™ Connector
Ref. DC4735
\$20+gst = \$22

NSK™ Connector
Ref. DC4731
\$20+gst = \$22



W&H RototQuick™
Ref. DC4736
\$14+gst = \$15.40



Bien Air™ Connector
Ref. DC4733
\$14+gst = \$15.40



E type lowspeed motor
all brands (set of 3)
Ref. GR95-237x3
\$20+gst = \$22

Gaskets for Handpiece connection



3 hole Bordern
Ref. DC0122
\$6+gst = \$6.60

4 hole Midwest
Ref. DC0123
\$6+gst = \$6.60

6 hole Fibre Optic
Ref. DC4710
\$6+gst = \$6.60

For Ultrasonic Scalers



EMS handpiece
Ref. 3A.0
\$3+gst = \$3.30

Amdent handpiece
Ref. AM.HP-0
\$6+gst = \$6.60

Cavitron™ Tip (pk12)
Ref. GR95-228
\$25+gst = \$27.50

DCI Triplex Syringes



Autoclavable Tip Type
Non autoclavable body
Ref. DC3439 - contra type
Ref. DC3459 - straight type
\$195+gst = \$214.50

Autoclavable Body Type
(excludes inner connector)
Ref. DC3370 - contra type
Ref. DC3350 - straight type
\$230+gst = \$253

Inner Connector
For autoclavable body syringe
Ref. DC3320 - contra type
Ref. DC3459 - straight type
\$195+gst = \$214.50

Service Kits

For autoclavable tip syringe
Ref. DC3306 all types
\$25+gst = \$27.50

For autoclavable tip syringe
Ref. DC3072 contra type
Ref. DC3035 straight type
\$28+gst = \$30.80

Globes [for your Dental Light]

24v 150w \$38+gst = \$41.80

Ref. GR4070

- A-dec
- Eurodent
- Belmont IO9000



\$27+gst = \$29.70

12v 55w

Ref. GR4071

- Belmont 048
- Dabi Atlante Reflex



\$45+gst = \$49.50

24v 70w

Ref. GR4072

- Belmont IO5000



\$52+gst = \$57.20

17v 95w

Ref. GR4073

- Faro EDI
- Ritter Planetlite



24v 150w

Ref. GR4074

- Faro S70
- Faro S90
- Faro S2000
- Ritter Starlite



\$50+gst = \$55

12v 50w

Ref. GR4075

- Sirona



\$90+gst = \$99

25v 150w

Ref. GR4076

- Pelton and Crane



LED Replacements for Handpiece Globes

LED upgrades for your existing handpiece connector. Long Life! Brighter and Whiter Output!

Ref. GRBU8012
• for KaVo - Dabi Atlante
\$90+gst = \$99



Ref. GRBU8012N
• for NSK
\$90+gst = \$99



Ref. GRBU8012WH
• for W&H
\$90+gst = \$99



Ref. GRBU8012SB
• for Sirona
\$90+gst = \$99



*Curing light globes also available.
Contact us for details*

Vacuum Handpieces - Fully autoclavable - NEW MODELS

ALL METAL | EASY TO CLEAN | SMOOTH OPERATION | ANTI-DEBRIS PREVENTION



**High Velocity Valve*
Long Nose type**
For 11mm/disposable tips
\$120+gst = \$132
Ref. DC5112

**High Velocity Valve*
Short Nose type**
For 11mm/disposable tips
\$110+gst = \$121
Ref. DC5131

**Saliva Ejector Valve*
Short Nose type**
For 6mm/disposable tips
\$99+gst = \$108.90
Ref. DC5222

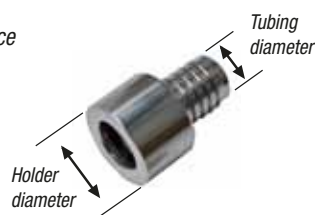
Add the adapters to suit your dental system

* above valves include the adapter of your choice

To suit US type dental units

High Velocity adapter
for holder dia 22mm
fits 12mm dia tubing
Ref. DC5107

Saliva Ejector adapter
for holder dia 16mm
fits 5mm dia tubing
Ref. DC217



To suit European type dental units

HVE adapter
for holder dia 26mm
fits 17-18mm dia tubing
Ref. DC5680

HVE adapter
for holder dia 28mm
fits 22mm dia tubing
Ref. DC5684

Saliva Ejector adapter
for holder dia 20mm
fits 11mm dia tubing
Ref. DC5681

Saliva Ejector adapter
for holder dia 18mm
fits 10-11mm dia tubing
Ref. DC5683



Saliva Ejector Tip
fits most US-style valves
\$9+gst = \$9.90
Ref. GR30-074



Saliva Ejector Adapter
fits any 11mm outlet
\$20+gst = \$22
Ref. GR30-088



Oral Rinse Cup
Autoclavable
fits 11mm outlet
\$26+gst = \$28.60
Ref. DC5840

Stainless Steel Suction Tips

For high volume suction lines.
11mm diam base fits most suction handpieces.

Do away with disposable tips!

BY
POPULAR
REQUEST!



Standard kink type
\$24.90+gst = \$27.39
Ref. GR30-440
for 10cm length
Ref. GR-460
for 15cm length

Kink type with relief slot
\$35.90+gst = \$39.49
Ref. DC5355
for 15cm length with relief
slot to prevent tissue
damage

Right angle type
\$31.73+gst = \$34.90
Ref. DC5356

Cleaning Brushes for Suction Valves

Supplied in packet of 5

Ref. GR95-301 - HVE line brushes - **\$18+gst = \$19.80**

Ref. GR95-301 - HVE line brushes - **\$18+gst = \$19.80**



Vacuum Tubing



Silicone Tubing

8.2mm inside dia*
11mm inside dia^
14.5mm inside dia*
15mm inside dia^
17mm inside dia
22mm inside dia

suits European chairs **per metre**

Ref. MS.40300019 **\$59+GST = \$64.90**
Ref. MS.40300012 **\$39+GST = \$42.90**
Ref. MS.40300020 **\$59+GST = \$64.90**
Ref. MS.40300001 **\$39+GST = \$42.90**
Ref. MS.40300002 **\$39+GST = \$42.90**
Ref. MS.40300004 **\$45+GST = \$49.50**

* denotes suits Sirona

^denotes suits A-dec



Solid Tubing

12.5mm inside dia
8mm inside dia

suits US dental chairs **per metre**

Ref. GR10 360 **\$19+GST = \$20.90**
Ref. GR10 235 **\$14+GST = \$15.40**

Vacuum Handpieces - Plastic type



High Velocity Valve
For 16mm tip - 17mm tubing
Holder diameter 26mm
Ref. MS.40100006
\$38+gst = \$41.80

Low Velocity Valve
For 11mm tip - 11mm tubing
Holder diameter 20mm
Ref. MS.40100007
\$35+gst = \$38.50



Suction Adapter
For 11mm tips to 16mm outlet
Ref. C160000
\$5+gst = \$5.50

DENTAL UNIT FILTERS & SCREENS



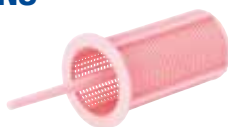
Suction Line Filter
Supplied in Packet of 10
Ref. DC6821
\$39+GST = \$43.90
Suits Sirona C8 and
Pelton & Crane units



Suction Line Filter
Supplied in Packet of 10
DC5818
\$28+GST = \$30.80
Suits Proma, Forest,
Midmark and Dabi units



Suction Line Filter
Supplied in Packet of 10
DC5817
\$28+GST = \$30.80
Suits Adec Decade units



Suction Line Filter
Supplied in Packet of 10
DC6818
\$35+GST = \$38.50
Suits Adec Cascade and
Performer units



Suction Line Filter
Supplied Individually
IV.072504100/1
\$18+GST = \$19.80
Suits Ritter, Dürr and
other European units



Suction Line Filter
Supplied Individually
CA1130
\$23+GST = \$25.30
Suits Ritter, Cattani and
other European units



Cuspidor Filter & Screen
Supplied in Packet of 10
DC5313
\$35+GST = \$38.50
Filter diameter (top) 63mm
Suits Belmont, Proma,
Forest, Midmark and other
US made dental units



Cuspidor Filter & Screen
Supplied in Packet of 10
DC5314
\$35+GST = \$38.50
Filter diameter (top) 40mm
Suits Ritter, Sirona, KaVo,
and other European made
dental units

New Dental Surgery Package

Starting a new surgery? Buy the right equipment set for the life of your practice.

Ritter Aria Smart Dental System

LED Highspeed Line | LED Electric Motor | LED Scaler | LED Light

For full details, see p1.



Made in Germany



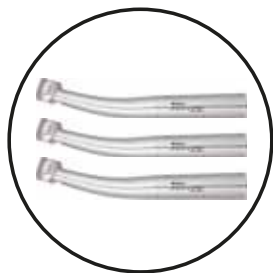
Ritter Aria Smart Package

\$59,800 inc GST

with all equipment listed

3 x MK Dent Highspeed Fibre-Optic Handpieces

For full details, see p6.



Melag 31B Class B Autoclave

For full details, see p11.



Dental Stools Set

For full details, see p11.



Ritter Leadex X-Ray

Wall mounted Intra-Oral DC.



3 x MK Dent Fibre Optic Lowspeed Handpieces

For full details, see p7.



Metasys META Air 70 Dental Compressor

For full details, see p12.



Metasys Hybrid 1 Suction

For full details, see p12.



OPTION: Digital Imaging Upgrade



Dürr Vistascan Mini Plus

Phosphor plate system

add \$13,750 incl GST to package